

SCHOOL OF MANAGEMENT, FUDAN UNIVERSITY

GRADUATE EXCHANGE FACT SHEET 2026-2027

FDSM Campuses & Contact



Guoshun Campus No. 670 Guoshun Road



Zhengli Campus No. 558 Zhengli Road

Graduate Exchange Coordinator
International Exchange & Cooperation Office

Room 506, Lidasan Building, Guoshun Campus, School of Management, Fudan University

Email: fdms_iec@fudan.edu.cn, Tel: +86-21-25011439

Nomination & Application

ENTRY

Prospective students are required to meet the follow qualifications:

REQUIREMENTS

- To be on graduate or above level
- To be officially nominated by one of FDSM's partner schools
- In good academic standing

DEADLINES

Term

Fall (Master & MBA)

Spring (Master & MBA)

Nomination Deadline

April 15

September 30

Application Deadline

April 30

October 31



APPLICATION

[Online Application Form:](#)

MATERIALS

Complete Fudan Exchange Student Application through online platform.

[Other Supporting Documents:](#)

Copy of Passport Page, Profile Picture, Copy of Degree Certificate, Official Transcript, Resume / C.V.



Exchange Academic Overview

TERM DATES

Fall Term: early September – early January (Masters and MBAs)

Spring Term: late February – early July (Masters and MBAs)

Flexible Exchange: Modular course (4 days) or half-semester course (2 months)

*Please note that the term dates are subject to change. The most up-to-date academic calendar will be sent to the students once confirmed. Exchange students have the flexibility to choose their length of stay, ranging from 1-2 weeks to an entire semester, or anything in between, based on their course selection. The exact length of exchange semester varies from student to student, according to their course and exam schedule. Students are encouraged to make their return flight arrangements after they confirm the exam date with professors.

ORIENTATION

International Student Orientation is mandatory for exchange students, hosted by the International Exchange & Cooperation Office. The orientation will usually be held in late August/early September and late February/early March, one week before the class begins. It is strongly recommended that students arrange to be in Shanghai one week prior to classes starting in order to attend the orientation, complete registration, arrange accommodation, and become familiar with the surroundings.

COURSE LOAD & CREDITS

Exchange students usually take between 2 and 6 courses per semester. MBA/Graduate-level courses are usually 1, 2 or 3 Fudan credit(s). One Fudan credit is equivalent to 18 contact hours, and one contact hour corresponds to 45-minute classroom period. For most of the half-semester-long courses, classes are held for 3.5 hours per week, and run for 7 weeks, followed by 2.5 hours' examination = 27



classroom hours (36 contact hours) = 2 Fudan credits. For 4-day module-based courses, they consist of four 7-hour classes and 3.5 hours of team works & final assignment (around 42 contact hours), and are generally equal to 2 Fudan credits.

ELECTIVE OFFERINGS

Course offerings vary from year to year. Please contact the exchange coordinator for the most updated course list. Most exchange courses are taught in English. Exchange students with Chinese language proficiency may register for electives taught in Chinese (if any).

TEXTBOOKS

The cost of textbooks is not included in tuition. Exchange students should purchase their own copies.

COURSE REGISTRATION PROCESS

The updated course list and course selection instruction will be available two months before the semester begins. All exchange students will be choosing their courses through the online course selection page on their FDSM Student Portal, which is on a first come, first-served basis.

*Please keep in mind that some courses may have certain work experience requirements. If a course reaches its enrollment capacity, students will not be able to select online, and will need to write to the academic advisor to become waitlisted. In addition, the School reserves the right to cancel courses that fail to meet the enrollment minimum.

ADD/DROP POLICY

After registering for courses, students may wish to make changes to their course schedule. Please review the following deadlines and policies before making any changes.

Adding a Course

During the online selection period, students can add courses on their Student Portal where seats are available. Adding a course after online selection period requires academic office approval.

Dropping a Course

When online selection system opens, students may drop courses by logging into their Student Portal. Once online registration ends, students may drop a course at least one month prior to the class start date without academic penalty (without receiving the grade of F) by submitting an email request to the exchange coordinator at cuisy@fudan.edu.cn.

WAITLIST

Students who wish to be added to the waitlist of a course that is full need to write an email request to exchange coordinator at cuisy@fudan.edu.cn.

CLASS ATTENDANCE

Class participation is mandatory and is part of the course grade. Students are required to inform the TA or the professor prior to the class if they will be absent. Travel reasons will not be approved as excuses. Usually, auditing is not allowed.

EXAMINATIONS

Exchange students able to fulfill the minimum 70% class attendance requirement are eligible to sit for final exams. Written exams or project presentations may take place the last session of the class or week after the last session. Students need to confirm the exam dates with the professors before they arrange their returns, and will not be excused from exams for air tickets.

GRADING

Grades	A	A-	B+	B	B-	C+
100	90-100	85-89	82-84	78-81	75-77	71-74
C	C-	D	D-	F		
	66-70	62-65	60-61	Re-sit	<59	

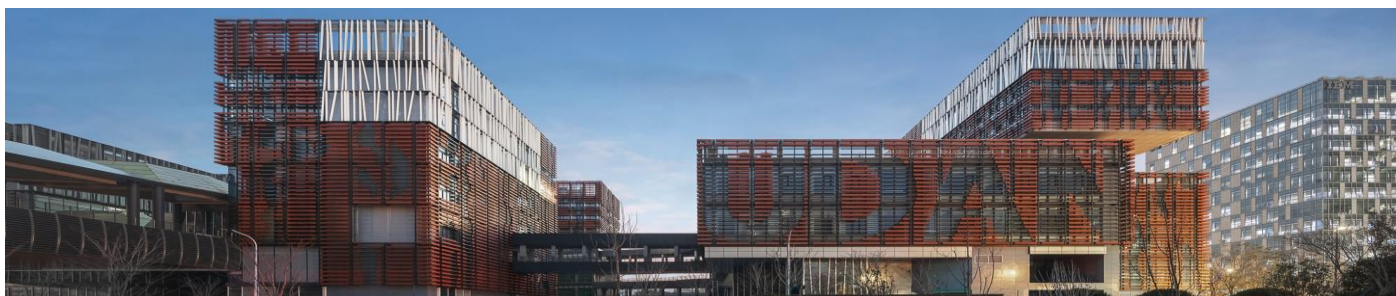


- Percentage of students who are graded A or A- shall be less than 30% of a class;
- Percentage of students who are graded B and above (including B, B+, A- and A) shall be under 70% of a class;
- Percentage of students who are graded C and above (including C, C+, B-, B, B+, A-, A) shall be under 90% of a class;
- Percentage of students who are graded below C- (including C-, D, and F) shall be at least 10% of a class;
- D- is graded for those who pass their re-sit examination only.

OFFICIAL

TRANSCRIPTS

An unofficial transcript can be requested for no charge via FDSM Student Portal. It does not bear the Dean's stamp, and can be downloaded from the Portal. Official transcripts are issued approximately 6 to 8 weeks following the end of the term. Official transcript in digital version will be sent to student's home coordinator's email, along with the e-certificate. Hard copies will only be provided upon request.



Practical Information

VISA & RESIDENCE PERMIT

All exchange students are required to obtain an X1 or X2 visa, based on their study periods. Upon acceptance, Fudan ISO will issue a JW201/JW202/DQ Form for students to apply for their visa at local Chinese Embassy or Consulate. Semester-long exchange students will receive X2 visa, which is issued to those who study in China for a period of no more than 180 days. Most students receive single entry on their X2 visa, which means that students cannot leave the Chinese mainland during the exchange semester (one additional entry is usually allowed during the semester). Students who do exchange for one academic year may receive X1 visa, which is issued to those who intend to study for more than 180 days. X1 visa holders need to apply for residence permit within 30 days of arrival in the country.

ESTIMATED EXCHANGE EXPENSES

Housing:	RMB ¥4000-6000/month
Meals:	RMB ¥ 50-100/meal
Mandatory Insurance:	RMB ¥ 400/semester
Transportation:	RMB ¥ 2-4 for bus, ¥ 3-7 for metro
Personal Spending:	RMB ¥ 2000/month

**Please note that student expenses vary based upon choices on housing and personal lifestyle.*



HOUSING

Students can apply online for on-campus international student dorms. Please check the [ISO webpage](#) for detailed information on on-campus accommodation. Due to very limited on-campus rooms, it is highly recommended that exchange students should prepare for their own housing arrangements off-campus. Exchange coordinator will share off-campus housing platforms and tips with students before the semester begins. Both FDSM Guoshun campus and Zhengli campus are a few blocks away from Fudan Handan main campus. FDSM Guoshun campus is located in the middle of Wujiachang metro stop and Guoquan Road metro stop at Line 10, near Fudan University metro stop at Line 18. FDSM Zhengli campus is located near Jiangwan Stadium metro stop at Line 10.

STUDENT SERVICES

The International Exchange & Cooperation Office will assist exchange student with communication matters, offers resources for them to navigate student life at FDSM. Students are highly encouraged to join the orientation activities, and many other talks and lectures on campus. The University dining halls, libraries and gyms are open to exchange students holding a campus card.

EXTRACURRICULARS

All exchange students are very welcome to join all kinds of student events on/off-campus throughout the semester. The exchange office will introduce featured programs opened to exchange students during the orientation info session. Email notifications and Wechat messages will also be sent to students to remind of the registration. Besides those



featured activities hosted by the School, exchange students are encouraged to actively participate in any event that align their interest and goals, to showcase their unique strengths and make a positive impact, or just for an experience and for fun.

INTERNSHIP OPPORTUNITIES

Exchange students are allowed to apply for a work permit in order to do off-campus unpaid internship during their exchange semester. Please consult the exchange coordinator to get more details regarding required documents and procedures. Kindly note that students holding S visa cannot apply for one additional entry, meaning that students cannot leave Chinese mainland with S2 visa.

CAREER RESOURCES

FDSM career services open to all exchange students. Exchange students are welcome to join campus talks, professional lectures, career fairs and recruitment events. They also have access to online data and resources that help them discover options for their career, gain experience to prepare for the future.

INTERNATIONAL EXCHANGE OFFICE AT FDSM

Director: Stephanie Xu, lihuaxu@fudan.edu.cn

Undergraduate Exchange: Harry Huang, huanghai@fudan.edu.cn

Graduate Exchange: Walter Wang, wanghaodong@fudan.edu.cn

General Inquires: fdms_iec@fudan.edu.cn

Office Location: Room 805, Lidasan Building, FDSM Guoshun campus
No. 670 Guoshun Road, Shanghai, 200433, China

