

Schulich School of Business

# The Weekend and Evening MBA

A Full-Time Program  
for Working Professionals

# The Weekend and Evening MBA

## at the Schulich School of Business

**With a 60.00 credit course load spread over six terms, the Weekend and Evening MBA offers domestic working professionals an efficient pathway to earn their degree, without pausing their career.**

The Weekend and Evening MBA takes the core elements of Schulich's traditional, full-time MBA in Year 1, and combines them with a curated list of Schulich's most popular MBA elective courses in Year 2. The result is a six-term, lock-step program that allows domestic working professionals to pursue up to three courses at once outside of their 9-5.

In the Fall and Winter terms, students are enrolled full-time in four courses, two of which are scheduled on weeknights, while the remaining two are scheduled in a condensed, consecutive format on Saturdays throughout the term. The result is the pursuit of no more than three courses in parallel, but the completion of four courses by term's end. In the Summer term, students are enrolled part-time in two courses, scheduled on weekday evenings.\*

This is largely an in-person program, with in-person exams. However, the courses will be taught in a hyflex environment, with students able to access a maximum of four classes for each course remotely, on a first come first served basis.

**For more information, visit: [schulich.yorku.ca/we-mba](https://schulich.yorku.ca/we-mba)**

\*As the Summer term is offered on a part-time basis only, enrolment in this program is limited to Canadian Citizens and Permanent Residents.



### START DATE



**September**

### COMPLETION TIME

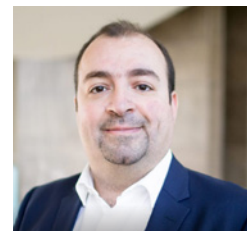


**24 months**

### STUDY OPTIONS



**Full time,  
with courses on  
weekday evenings  
and weekends**



#### **WISSAM AL-HUSSAINI**

*PhD (Concordia)*

**Associate Director,  
MBA Program**

Adjunct Professor of  
Strategic Management/Policy

#### **Area of Expertise**

- Strategic Management/Policy

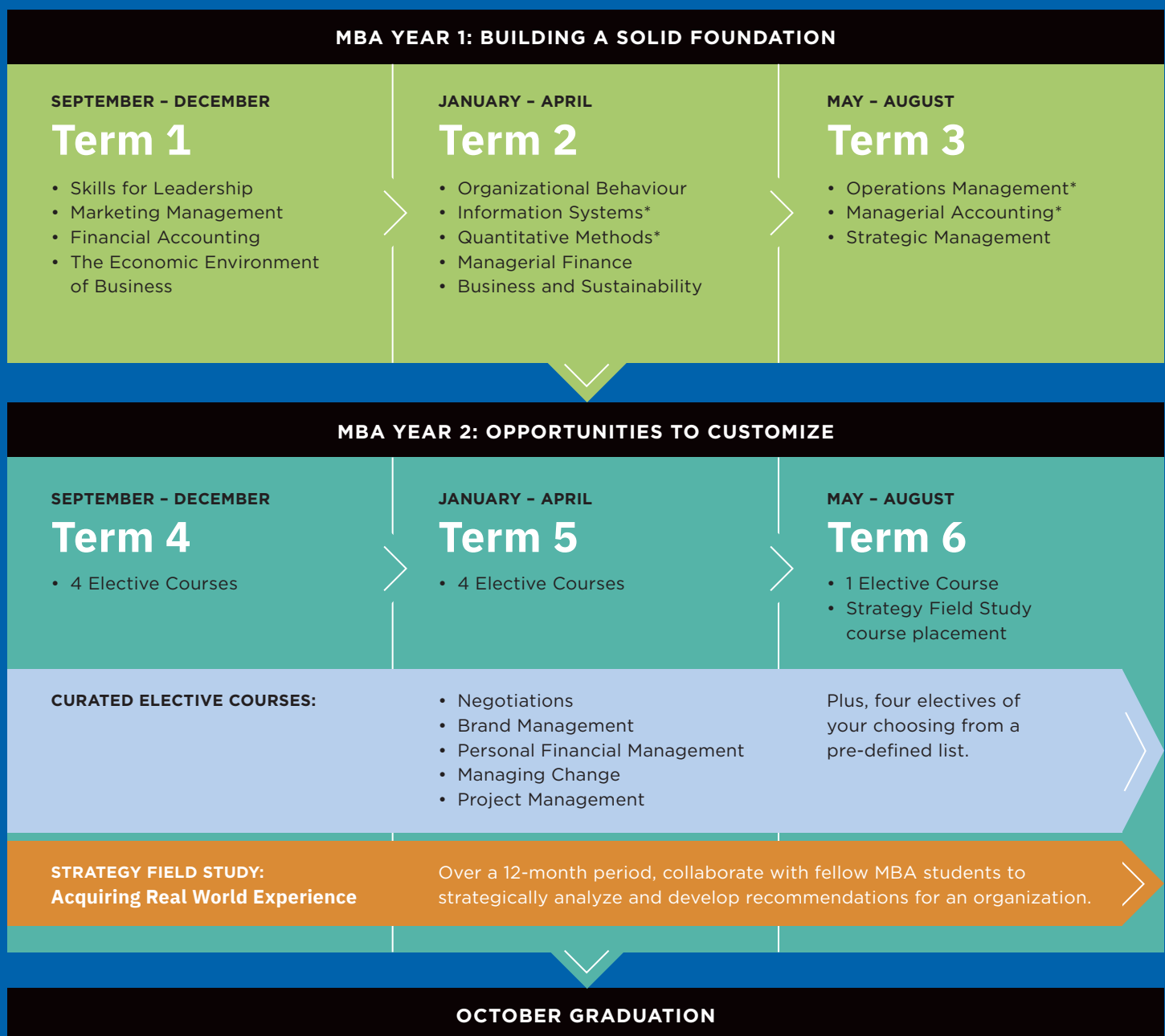
#### **Research Interests**

- Leadership

# Your Weekend and Evening MBA Journey

## Course Structure

The structure of the Weekend and Evening MBA allows our students to experience the best of what Schulich has to offer. We've combined the School's foundational core curriculum with our most popular elective courses and capstone consulting project. In addition to the Weekend and Evening MBA's academic curriculum, students benefit from a rich co-curricular experience including career development activities, and involvement in Schulich's thriving, close-knit student and alumni community.



\* These are 1.5 credit courses that take 6 weeks to complete (instead of the 12 weeks required for a 3.00 credit course).

# Admission Requirements

## What You Need to Apply

Pursuing a business degree is an important decision. At Schulich, we support you with an application experience that leaves you feeling informed and empowered.

<b>EDUCATION</b>	3- or 4-year degree from recognized post-secondary institution
<b>GPA</b>	B
<b>GMAT/GRE*</b> <small>*Highly qualified candidates may be considered for a GMAT/GRE waiver on a case-by-case basis.</small>	Acceptable score on all dimensions The GMAT/GRE Online Exam is acceptable
<b>WORK EXPERIENCE</b>	<ul style="list-style-type: none"><li>• 2 years with a 4-year undergraduate degree</li><li>• 3 years with a 3-year undergraduate degree</li></ul>
<b>LANGUAGE PROFICIENCY*</b>  <small>*Applicants must produce proof of language proficiency in one of the three ways listed.</small>	<b>PROOF OF STUDY COMPLETED IN ENGLISH:</b> 2 years minimum (must be full-time study) at an accredited university in a country (or institution) where English is the official language of instruction
	<b>IELTS (ACADEMIC TEST):</b> 7.0 (minimum 6.5 on each dimension) The IELTS online Academic Test is acceptable
	<b>TOEFL:</b> 100 (minimum 23 on each dimension) The TOEFL iBT Special Home Edition test is acceptable
<b>ESSAYS</b>	2 video, 2 written, 1 timed written
<b>REFERENCE LETTERS</b>	2 reference letters

# Tuition Fees

Figures are based on the currently approved fee framework. Fees listed below include tuition and supplementary fees. For full details on all current tuition, supplementary fees, and student health plans, visit the York Student Financial Services website: [sfs.yorku.ca/fees](https://sfs.yorku.ca/fees). Fees are subject to change.

*Fees are in Canadian dollars (CAD)*

<b>WEEKEND AND EVENING MBA<sup>1</sup></b>  <b>Available for domestic students only (Canadian Citizen or Permanent Resident)</b>	<b>Full-time</b> <b>TUITION PER TERM (Terms 1, 2, 4, and 5)<sup>2</sup></b>	<b>\$ 18,045</b>
	<b>ESTIMATED PROGRAM TOTAL</b>	<b>\$ 72,180</b>

<sup>1</sup> The completion time for the Weekend and Evening MBA is six terms. Terms 1, 2, 4, and 5 are completed on a full-time basis, and terms 3 and 6 are completed on a part-time basis.

<sup>2</sup> The two summer terms of the Weekend and Evening MBA – terms 3 and 6 – are tuition-free. Other applicable fees (i.e. health and dental plans) may apply.

# Financial Aid

We welcome the opportunity to discuss ways to finance your education and the return on investment our programs offer. For more information, send us an email at: [finaid@schulich.yorku.ca](mailto:finaid@schulich.yorku.ca) or visit: [schulich.yorku.ca/financial-aid](https://schulich.yorku.ca/financial-aid).



## MBA FELLOWSHIP OPPORTUNITIES

Building upon the School's commitment to equity, diversity and inclusion, Schulich is proud to partner with the following organizations, offering fellowships to students with disabilities, women, and members of the LGBT+ community.



Access to Success  
Fellowship



Forté  
Fellowship



Reaching Out  
MBA Fellowship

Schulich's Weekend and Evening MBA offers domestic working professionals an efficient pathway to earn their degree, without pausing their career.

[www.schulich.yorku.ca/we-mba](http://www.schulich.yorku.ca/we-mba)

### LEARN MORE ABOUT THE SCHULICH EXPERIENCE

Join us for an information session.

Register at: [www.schulich.yorku.ca/events](http://www.schulich.yorku.ca/events)

Meet one-on-one with our admissions team to discuss your profile.

Register at: [www.schulich.yorku.ca/grad-inquiry](http://www.schulich.yorku.ca/grad-inquiry)

### CONNECT WITH US



Follow us on Instagram:

[@SchulichSchool](https://www.instagram.com/SchulichSchool)



Follow us on Twitter:

[@SchulichSchool](https://twitter.com/SchulichSchool)



Connect with us on LinkedIn:

[www.linkedin.com/school/SchulichSchool](http://www.linkedin.com/school/SchulichSchool)



Like us on Facebook:

[www.facebook.com/SchulichSchool](http://www.facebook.com/SchulichSchool)



Contact the Recruitment Team:

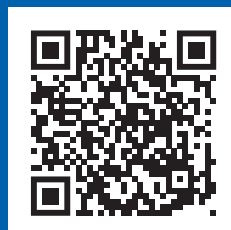
[www.schulich.yorku.ca/grad-inquiry](http://www.schulich.yorku.ca/grad-inquiry)

### EXPLORE OUR ALUMNI STORIES



Scan the QR code or visit us on YouTube:

[www.youtube.com/user/SchulichSchool](http://www.youtube.com/user/SchulichSchool)



### SCHULICH SCHOOL OF BUSINESS

#### Keele Campus

York University, 4700 Keele Street  
Toronto, Ontario, Canada M3J 1P3

[Click here for campus location](#)



Seymour Schulich Building



Rob and Cheryl McEwen  
Graduate Study & Research Building

CLICK HERE  
for a virtual  
tour!



Canada's Top-Ranked Business School  
Global Reach. Innovative Programs. Diverse Perspectives.

Schulich MBA: #1 IN CANADA (Corporate Knights) Top 25 in the World for Careers in Finance, Marketing & Operations Management (QS TopMBA) Kellogg-Schulich Executive MBA: #1 IN CANADA (The Economist, Financial Times, QS TopMBA) #7 IN THE WORLD (QS TopMBA) #9 IN THE WORLD (The Economist)

