

# Pre-Arrival Guide: 2-Week Summer Program Summer 2024



**Schulich**  
School of Business

**YORK**  
UNIVERSITÉ  
UNIVERSITY

Welcome to Schulich's webinar. We will begin shortly  
Please mute your microphone and disable your video sharing  
We will be using the chat box  
Please tell us your name and school you are coming from



# Planning for Canada Overview

## Program Overview

- Sample Schedule

## Pre-Arrival Checklist

- Travel Documents
- Accommodations
- University Health Insurance
- Packing List

## Arrival in Toronto

- Transportation from Airport
- Public Transportation
- Shopping for Food Online



<b>Ann Welsh</b>	<b>Vino Shanmuganathan &amp; Sophie Yang</b>
Associate Director International Relations	International Student Support Specialists
<b>Cheryl Stickley</b>	<b>Nadine Samala-Lamoste</b>
Graduate International Program Coordinator	International Partnerships Specialist
<b>International Relations Office</b>	<b>Room W262, SSB</b>
Virtual Office Hours:	Mon – Fri, 9:00AM – 4:00PM
Email:	<a href="mailto:exchange@schulich.yorku.ca">exchange@schulich.yorku.ca</a>
Website:	<a href="#">Incoming Exchange</a>

# PROGRAM OVERVIEW

## Intelligent Innovation Ecosystem Design

---

**Monday, June 3 – Friday, June 14**

- Program begins June 3<sup>rd</sup> (time to be confirmed). Plan to arrive in Toronto by June 2<sup>nd</sup>
- A detailed program schedule will be provided in advance

**Program includes:**

- Course materials
- Lectures, guest presentations
- Site visits
- Social and cultural excursions
- Welcome/farewell dinner
- Sightseeing tour in Toronto
- CN Tower visit
- Day trip to Niagara Falls
- Public transportation pass
- Transportation to/from all excursions

**UNLOCK THE STRATEGIES BEHIND CREATING A THRIVING  
TECH & INNOVATION ECOSYSTEM:**

Learn the frameworks and strategies behind sparking, scaling, and sustaining Tech & Innovation from the most influential ecosystem design minds in Toronto.

**BENEFIT FROM HIGHLY  
EXPERIENTIAL AND  
INTENTIONAL LEARNING**

Put theory into practice using real-life frameworks, strategies, and case studies, following the start-up journey from early-stage to exit across several verticals



**LEARN STRATEGIES TO  
UNLOCK A THRIVING  
INNOVATION ECOSYSTEM**



Toronto's entry and dominance in the Tech & Innovation space, paired with Schulich's global brand, brings fresh and strategic insights for standing out in this competitive industry

**IMMERSE YOURSELF IN A  
CULTURE OF TECH &  
INNOVATION**

Learn from some of the most influential ecosystem design minds and innovators in Toronto with site visits to strategic locations in Toronto's booming tech sector



**Optional:**

Stay in Toronto to attend the [Collision Conference](#) June 17 – 24, 2024. This is known as one of the world's largest tech conferences bringing together people and companies that are redefining the global tech industry

# PROGRAM OVERVIEW

## Sample Schedule – Week 1

WEEK 1	Monday 12-Jun	Tuesday 13-Jun	Wednesday 14-Jun	Thursday 15-Jun	Friday 16-Jun	Saturday 17-Jun
Dress code	Casual	Casual	Casual/Business	Business	Casual	Casual
9:00-9:30	Free Time	<b>Innovating with Universities and Colleges</b> Michelle Eaton, VP of Public Affairs at the Ontario Chamber of Commerce <i>Nadal Campus Lecture Room #2</i>	<b>The Role of Incubators and Accelerators</b> Ben Stacey, Regional Manager at Founder Institute <i>Nadal Campus Lecture Room #1</i>	<b>Leveraging Governmental Support</b> Janet Bannister, Managing Partner at Staircase Ventures <i>Nadal Campus Lecture Room #1</i>	<b>Working with Service Providers</b> Ally Ladha, Co-Founder at AMLB CPAs and Consulting <i>Nadal Campus Lecture Room #1</i>	<b>Day Trip to Niagara Falls &amp; Niagara on the Lake</b>  <i>Keele Campus 8 am to 5 pm</i>
9:30-10:00						
10:00-10:30	<b>Arrival &amp; Welcome Orientation</b> <i>Nadal Campus Lecture Room #2</i>					
10:30-11:00						
11:00-11:30						
11:30-12:00	<b>Welcome Lunch</b> <i>Nadal Campus</i>	Free Time (Lunch on your own)	Free Time (Lunch on your own)	Free Time (Lunch on your own)		
12:00-12:30						
12:30-13:00	<b>Understanding the Innovation Flywheel</b> Cherry-Rose Tan <i>Nadal Campus Lecture Room #2</i>	<b>Walking Tour</b> <i>Downtown Toronto</i>	Free Time	<b>Site Visit: MaRS Discovery District</b> Asvini Keerawella, Program Director, National Programs <i>Downtown Toronto</i>		
13:00-13:30						
13:30-14:00						
14:00-14:30						
14:30-15:00	Free Time	Free Time	Free Time	Free Time		
15:00-15:30						
15:30-16:00						
16:00-16:30	Free Time	Free Time	Free Time	Free Time		
16:30-17:00						
17:00-17:30	<b>Harbour Tour</b> <i>Downtown Toronto</i>	Free Time	<b>Schulich Start-Up Night</b> <i>OneEleven</i>	Free Time		
17:30-18:00						
18:00-18:30						
18:30-19:00	<b>Welcome Social</b> <i>Downtown Toronto</i>	Free Time	Free Time	Free Time		
19:00-19:30						
19:30-20:00						
20:00-20:30						
20:30-21:00						
21:00-21:30	Free Time	Free Time	Free Time	Free Time		
21:30-22:00						
<b>* Schedule Subject to change</b>						

# PROGRAM OVERVIEW

## Sample Schedule – Week 2

WEEK 2	Monday 19-Jun	Tuesday 20-Jun	Wednesday 21-Jun	Thursday 22-Jun	Friday 23-Jun	
Dress code	Casual	Business	Casual	Business	Business	
9:00-9:30	<b>Strategizing for Venture Capital</b> Jo Ann Dizy, Co-Founder and CEO of #GrowTogether <i>Nadal Campus Lecture Room #1</i>	<b>Rise of Corporate Innovation</b> Paula Gamble, Founders Hub Program Lead at Microsoft <i>Nadal Campus Lecture Room #1</i>	<b>Why Diversity, Equity and Inclusion Matter</b> Lisa Mah, Associate Director at CDL Toronto <i>Nadal Campus Lecture Room #1</i>	<b>Integrating Mental Health and Resilience</b> Luke Vigeant, SVP of Product at GreenShield <i>Nadal Campus Lecture Room #1</i>	<b>Consulting Presentations with Cherry Rose Tan</b> <i>Nadal Campus Lecture Room #1</i>	
9:30-10:00						
10:00-10:30						
10:30-11:00						
11:00-11:30						
11:30-12:00	Free Time	Free Time <i>(Lunch on your own)</i>	Free Time	Free Time <i>(Lunch on your own)</i>	Free Time	
12:00-12:30						
12:30-13:00						
13:00-13:30						
13:30-14:00		<b>Site Visit: CIBC Innovation Banking,</b> Shelley Li, Director, <i>Downtown Toronto</i>		Free Time		<b>Site Visit: DMZ</b> Nikolina Susac, Events & Operations Manager <i>Downtown Toronto</i>
14:00-14:30						
14:30-15:00						
15:00-15:30		Free Time		Free Time		Free Time
15:30-16:00						
16:00-16:30						
16:30-17:00						
17:00-17:30						
17:30-18:00						
18:00-18:30						
18:30-19:00						
19:00-19:30						
19:30-20:00						
20:00-20:30		<b>Second City Show</b> <i>Downtown Toronto</i>		Free Time		<b>Farewell Dinner</b> CN Tower
20:30-21:00						
21:00-21:30						
21:30-22:00						

Dress code	Women	Men
Business	Dress pants/skirt, blouse	Dress pants, shirt, blazer

\* Schedule Subject to change

# PREPARING TO ARRIVE IN CANADA

## Pre-Arrival Checklist

---

- Travel [Documents](#)
- Class [Location](#)
- Secure [Accommodations](#)
- Learn about [University Health Insurance](#)
- [Packing List](#)

# PREPARING TO ARRIVE IN CANADA

## Travel Documents

---

- Students studying for **less than 6 months** do not require a study permit. You can apply to enter Canada as a visitor.
  - Length of stay will be determined at the border when you arrive, but typically granted for 6 months
- Depending on your [country of citizenship](#), to enter Canada you will need to apply for:
  - Temporary Resident Visa (TRV); or
  - Electronic Travel Authorization (eTA)
- If you require a TRV, it is recommended that you apply as early as possible, as processing times can be lengthy
  - Be sure to review all of the [required documents](#) and include them with your application
  - Include your Schulich Letter of Acceptance when applying

### Travelling to the USA After the Program

- Consider any planned travel to the US and whether you will need a [visa](#) or [ESTA](#)
- If possible, apply for your US visa before you leave your home country; it can be challenging to obtain US visa from Canada

# PREPARING TO ARRIVE IN CANADA

## Class Location

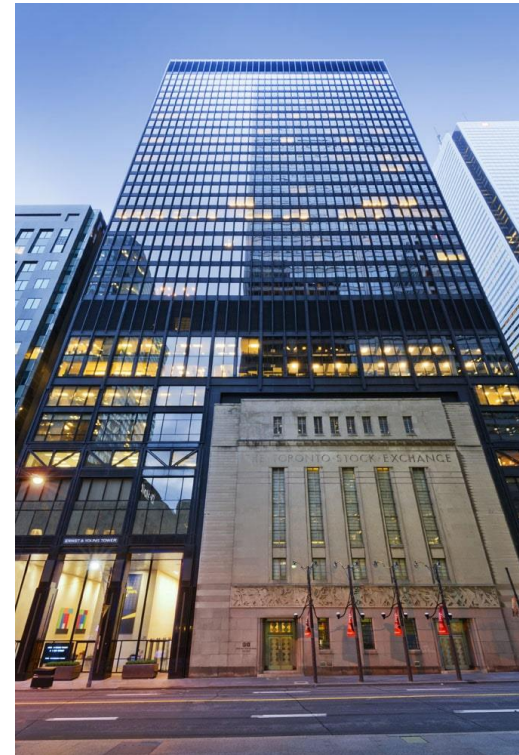
---

All classes will be held at the **Miles S. Nadal Management Centre** in the heart of Toronto's financial district

### **Toronto Dominion (TD) Centre East Tower**

222 Bay Street, Suite 500 (between King and Bay St.)

The closest subway stop is Union Station with a short (4 min) walk to the TD Centre





# PREPARING TO ARRIVE IN CANADA

## Accommodation

Students can choose their own accommodations to suit their budget. This can range from private short term rental options to hotels or hostels

### Short Term Stay

- The many neighbourhoods found in the Downtown and Midtown areas of the city are always popular with students who choose to live off-campus because of their close proximity to the [Yonge-University subway line \(Line 1\)](#) and an abundance of student-friendly businesses and housing options



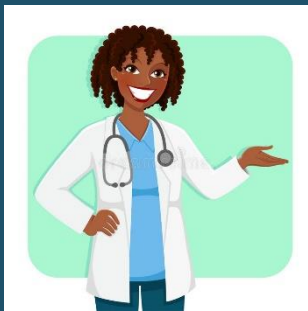
### Option: Executive Learning Centre Hotel

- Located on York U. main campus; approx. 45 mins by subway
- Contact: [ELC Accommodation](#) ([reservations@schulich.yorku.ca](mailto:reservations@schulich.yorku.ca)) for availability and quote “**SSIR Summer Program**” to receive discounted rates



# PREPARING TO ARRIVE IN CANADA

## Health Insurance



### University Health Insurance Plan (UHIP)

- Mandatory for all international students who are physically in Canada
- Coverage includes services such as doctor's fees, hospital fees & accommodation, x-rays and blood tests in Ontario and emergency services within Canada
- UHIP does not cover medications, dental care, paramedical services, etc. *(students are strongly encouraged to obtain extended/supplemental insurance)*
- The cost is included in the program fee
- For more information visit the [UHIP website](#) and the [York University UHIP website](#)

# PREPARING TO ARRIVE IN CANADA

## When to Arrive and What to Bring

---

Review what to [expect at the airport](#) when you arrive in Canada

### Important Items to Pack

- Valid Passport, with your Temporary Resident Visa (TRV) or electronic Travel Authorization (eTA), as required; or US passport\*
- Letter of Introduction from the visa office (if applicable)\*
- Your Schulich Acceptance Letter (copies acceptable)\*
- Proof of funds\*
- Address where you will be residing\*
- Photocopies/digital copies of all important documents (also send them to your email)\*
- Medications, health documents and prescriptions (if applicable); check [import limits](#) for medications
- Medical insurance documents for any additional health/travel coverage (if applicable)
- Driver's license or international driver's license ([drivetest.ca](http://drivetest.ca)); driver's abstract/history
- Credit card(s) and Canadian dollars for immediate use upon arrival
- Power type A and B: Standard voltage is 120V, standard frequency is 60Hz <https://www.power-plugs-sockets.com/canada/>
- Unlocked phone
- Laptop
- Business attire for presentations and company visits
- Weather appropriate clothing for the [season](#)

\* Pack items in your carry-on luggage as you will be required to show these to the border officer upon arrival (before getting your checked luggage)

# ARRIVAL IN TORONTO

## Checklist

---

- [Transfer](#) from the airport and check into your accommodation
- Learn how to use [Public Transportation](#)
- Shop [Online](#) for Food
- [Explore](#)



# ARRIVAL IN TORONTO

## Transferring from Pearson International Airport

---

### Airport Taxi

- Taxi fares from the airport are based on a flat rate tariff
- Fare : \$50-60 CAD approximately (tips and extra luggage fee extra)
- Travel time: 30 minutes to York campus
- Taxis will be waiting at the airport terminal exit. Use only authorized taxi providers
- For more information on taxi services, visit the [Pearson Airport](#) website



### Ride-Hailing Apps

- Use [Uber](#) or [Lyft](#) to and from airport
- Fare: approximately \$50 from airport to York U
- Uber Rider kiosk available as you leave baggage area



### Airport Train to Downtown - Union Pearson (UP) Express

- Departs from Terminal 1 (Pearson Airport)
- Fare: **\$12.35** by cash/credit card
- Connects to Union and Bloor subway stations
- Travel time: 25 minutes to Union Station (downtown)
- Pick up locations and schedules, see [UPExpress at Pearson](#)

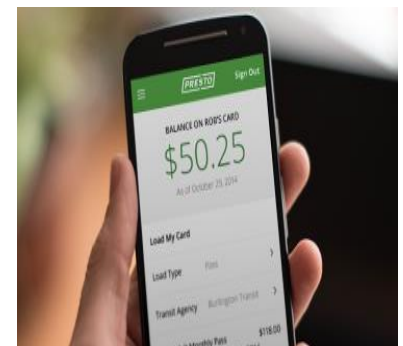
# ARRIVAL IN TORONTO

## Public Transportation – Presto Card

You will be provided with a pre-loaded [PRESTO](#) card to cover all transportation expenses for the program

- Tap your card to pay
- Hop on/off any direction for 2 hours without being charged again from the 1<sup>st</sup> time you tap on
- [OneFare](#) among various GTA transit systems
- Additional fares used outside of the program will be at your own expense if additional funds are needed:
  - Reload card at a vending machine (found in subway stations)
  - Create a profile and load funds in advance [online](#) - may take up to 24 hours to reload

A PRESTO card provides access to “[PRESTO Perks](#)” - receive discounts to some attractions and events



Other payment methods:



# ARRIVAL IN TORONTO

## Public Transportation in the GTA

### Toronto Transit Commission (TTC)



- Serves City of Toronto
- Can tap multiple times in 2-hr window for one fare
- Closest stop: York University station
- For more information, visit: [TTC website](#)

### York Region Transit (VIVA/YRT)



- Serves areas north of York University (York Region)
- Closest stop: Pioneer Village TTC station
- For more information, visit: [YRT website](#)

### Mississauga Transit - MiWay



- Serves Mississauga region
- Closest stop: Islington TTC station
- For more information: visit: [MiWay website](#)

### GO Transit



- Connects to regional locations: Mississauga, Brampton, Hamilton, Scarborough, Milton etc.
- Closest stop: Highway 407 TTC station and bus terminal
- For more information, visit: [GO website](#)

### Brampton Transit (ZÜM)



- Serves Brampton region
- Closest stop: 5 min walk north of Schulich on Ian McDonald Blvd
- For more information, visit: [ZÜM website](#)

**Note:** Fares vary across transportation systems (usually approx. \$3.30-\$4.00/ride) and can be paid by cash or by tapping debit/credit card/PRESO card. Cash fares are usually slightly more expensive.



# ARRIVAL IN TORONTO

## Shop Online

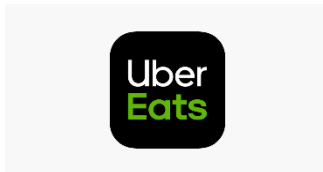
---

There are a number of online delivery services available. Here are some of our most popular in Toronto

### Grocery Delivery



### Restaurant / Fast Food Delivery





# ARRIVAL IN CANADA

## Explore!

---

### Toronto

Information: [www.toronto.ca](http://www.toronto.ca)

Visitor Information: [www.toronto.ca/visitors/index.htm](http://www.toronto.ca/visitors/index.htm)

Tourism: [www.seetorontonow.com](http://www.seetorontonow.com)

Festivals & Events: [www.toronto.ca/explore-enjoy/festivals-events/festivals-events-calendar/](http://www.toronto.ca/explore-enjoy/festivals-events/festivals-events-calendar/)

### Ontario

Tourism: [www.ontariotravel.net/en/home](http://www.ontariotravel.net/en/home)

Festivals & Events: [www.festivalsandeventsontario.ca/](http://www.festivalsandeventsontario.ca/)

### Canada

Information: [www.canada.gc.ca](http://www.canada.gc.ca)

### Travel to the USA

Visa information: <https://ca.usembassy.gov/embassy-consulates/toronto/>



Weekly  
Events in  
Toronto



Toronto  
Travel Guide



Festivals &  
Events  
Ontario



My TTC



Presto



Shopping  
(find deals)

