

A blue flag with a yellow border and the Sasin logo (a crest with a crown and two figures) and the word "Sasin" in gold. The background shows a modern building with glass windows.

Sasin

---

Fact sheet  
2024-2025

---

# Welcome to Sasin

*Bangkok, Thailand*

Enjoy your time in one of  
Asia's most livable city

# Why Bangkok?

**Sasin School of Management is located in the heart of Bangkok, Thailand:** a modern, cosmopolitan metropolis with a rich history and culture. As the most visited city in the world, the logistics hub of ASEAN and one of the most dynamic cities in Southeast Asia, it is fun, exciting, vibrant and one of the most international and livable cities in the region.

Established in 1917, Chulalongkorn University is Thailand's oldest and most prestigious academic institution, located on a spacious campus in Bangkok's Central Business District.

Sasin occupies a prime position on that campus, combining a peaceful park-like setting with easy access to major office and shopping centers.

Bangkok's modern and efficient skytrain and metro systems are a 5-10 minute walk away - just a few minutes by the university's free electric shuttle service.



with over  
**750,000 expats**

Competitive  
**COST OF LIVING**

# Why Sasin?

Established through a partnership of



**Thailand's first globally accredited business school**

One of the few Southeast Asian business schools with the top two global accreditations



**1st BSIS Impact School in Southeast Asia**

World's Top **100** / Asia's Top **10**



**Global MBA Rankings 2021 for Entrepreneurship & Alumni Outcomes and Class & Faculty Diversity**

**40+**  
global partners  
in 19 countries

**60%**  
of our courses  
taught by visiting professors from top schools in North America, Europe, and Asia.

**5,000+**  
Alumni  
unrivaled network across the region and around the world

## Nomination Process

The Sasin Exchange Coordinator will email all partner institutions to fill out a nomination form. After we agree and/or accept your nomination, students will receive their online application link to their email.

## Students register (online application)

Our application process is entirely conducted online. Nominated students will receive an email containing detailed instructions guiding them through the account activation process on our portal, known as mySasin.

The Initial account activation requires the following 4 items below:

1. Front face photo (1 MB)
2. Scan a passport bio page
3. Emergency contact
4. Work experience or resume

## Academic Dates

<b>Module 1</b>	August 1 - 31, 2024
<b>Module 2</b>	September 5 - October 5, 2024
<b>Module 3</b>	October 15 - November 16, 2024
<b>Module 4</b>	November 21 - December 21, 2024
<b>Module 5 (intensive)</b>	January 3 - 11, 2025
<b>Module 6</b>	January 16 - February 15, 2025
<b>Module 7</b>	February 20 - March 22, 2025
<b>Module 8 (intensive)</b>	March 28 - April 5, 2025
<b>Module 9</b>	April 17 - May 17, 2025
<b>Module 10</b>	May 22 - June 21, 2025
<b>Module 11</b>	June 26 - July 26, 2025

**Note: The Sasin academic year begins in July with a pre-module course called Skills & Values. This is not included in the schedule because exchange students cannot register for this module.**

## Sample Course Schedule\*

Module	Date	Day Time	Evening Time	
		9 AM - 12.30 PM or 1.30 - 5 PM	6 - 9.30 PM	
Module 7	February 22 - March 23, 2024	Investment	Content Marketing	Leadership for Impact
		Innovation & Design Thinking		Family Business: Managing Growth and Succession
Module 11	June 26 - July 27, 2024	The Age of Disruption: Impact on Business Environments	Becoming a Mindful Leader	Data Science and Visualization for Business
		Comparative Business Environment		Brand Management
				New Venture Fundings

\*for example purposes only; actual courses may differ.

## ● Sample Courses

### Data Science and Visualization for Business



**Dr. Stefano Starita**  
Faculty, Management

### Accounting for Decision Making



**Dr. Mark Finn**  
Clinical Associate Professor of  
Accounting and International Business  
Kellogg School of Management  
Visiting Professor

### AI & Business



**Dr. Pinnaree Tea-Makorn**  
Faculty, Management

## ● Academic Policies

### Class Attendance

Sasin's attendance rules follow Chulalongkorn University's policies that students must maintain a minimum of 80% attendance in order to complete a course.

**Please note: class schedules may change.**

### Course Registration

Registration takes place about 3-4 weeks before the module starts. There are specific add/drop and withdrawal periods where course selections can be adjusted, but may be subject to certain grade penalties.

**Please note: textbook/course materials are non-refundable.**

### Course Load

Regular modules have on average 2 to 5 course selections per module; intensive modules have only 1 course offering. Each course, including intensive courses, is worth 3 Sasin credits. 3 Sasin credits is equivalent to 33 contact hours (including exam hours).

### Elective Courses

Exchange students are limited to the selection of elective courses exclusively. For more information about elective courses <https://www.sasin.edu/mba-elective-courses>



## ● Estimated Expenses

Typical expenses for a one-month period in Bangkok:

Expense	Price (Baht)
Housing at CU-iHouse	14,000
Utilities-electricity, telephone, etc. (approximately)	900
Meals (three times a day)	3,000
Course materials and academic expenses	2,000
Personal spending money	10,000
<b>Total</b>	<b>29,900</b>

**Note: Your total expenses will depend on your individual preferences and lifestyle.**



## ● Visa Information

After you're accepted into the exchange program, please contact the Sasin Exchange Coordinator to arrange for an official acceptance letter from Sasin. You will need to submit that letter to your nearest Thai Embassy or consulate to obtain your visa. You can apply for a single or multiple entry "education" (ED), non-immigrant visa, valid for at least 3 months. If you plan to travel in the region during your time at Sasin, we recommend you apply for a multiple entry education visa. (Otherwise, you will need to obtain a separate "re-entry permit" before traveling outside Thailand.)

**\*\*\*\* Please check with your Thai Embassy/Consulate for current entry procedures.\*\*\*\***

### Re-Entry Permits

If you plan to travel outside Thailand for a short period and you have single entry education visa, you must apply for a "re-entry permit" at the Immigration Bureau or at the airport before leaving the country. You can request a single entry or multiple entries.

Requirements:

- 1,900 Baht for single re-entry;
- 3,800 Baht for multiple re-entry;
- TM 8 application form
- Your passport
- Your photograph (4 x 6 cm)

Student Experience can give you more information or go to <https://www.immigration.go.th>

**\*Note: Fees are subject to change.**

## ● Health Insurance (Required)

We require all exchange students to have international health insurance to cover accidents and health/medical issues during their time at Sasin.

## ● At Sasin



### Your first day

When you arrive at Sasin, **please call +66 (0)2 218-3850**, or ask for the Student Experience team at reception. You will receive your Sasin Student ID and an introduction to Sasin, including a facility tour.

### Welcome to Thailand

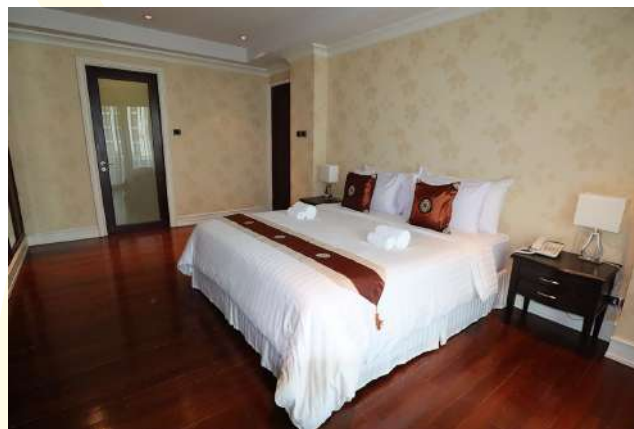
During your time at Sasin, the Student Experience team will welcome you with an optional half-day trip to some of Bangkok's historic and cultural attractions.

**Note: Itinerary and availability may be subject to change.**



## ● Accommodation

### On-Campus Housing



**Sasa International House**, closest to Sasin is located within a three-minute walk. Rates are 25,200 baht/month (includes room cleaning service but excludes breakfast & electricity).



**CU iHouse - Chulalongkorn University**, is a short walk from Sasin, just off-campus. Daily rental rate is 1,400 baht/room/night, and the monthly rate is 14,000 baht/month. Upon check in, you must pay the 1-month rental fee and 1-month room deposit for a total of 28,000 baht. Your 1-month deposit will be returned to you after checkout (provided you have stayed to term and there is no damage to the room).

**Note: If the length of your stay changes, you will have to inform CU-iHouse 1-month in order to process the return of your deposit.**

**Additional details for on-campus living:**  
[www.chula.ac.th/en/prospective-student/accommodation](http://www.chula.ac.th/en/prospective-student/accommodation)

## ● Sasin Facilities

### Toemsakdi Krishnamra Hall



Toemsakdi Krishnamra Hall, the focal point of Sasin's newly-renovated space, is used for talks, workshops, and other events, reflecting Professor Toemsakdi's legacy of blending influential people and important ideas.

### Sasa Commons

The ultimate social space where members of the Sasin community and guests can eat, hangout, or have a casual meeting.



### Workshops & Meeting Rooms

A perfect space for collaboration and lifelong learning!



### Café DoiTung



### Health Services



Students can access the Chulalongkorn Health Center (on campus) or Sasin Experience on the 6<sup>th</sup> floor for over-the-counter medicines (such as Tylenol, Actifed, etc.).

Partnered with Chulalongkorn University

### Recreational Facilities

The Chulalongkorn University Recreational Center is only a five-minute walk from the school and the price is affordable. There are also a number of commercial fitness centers near campus.

Partnered with Chulalongkorn University





## Getting Around Bangkok

Bangkok public transport is a cheaper and more exciting option, giving you much more local traveling experience. You can find various means of transportation in Bangkok-city trains (metro, skytrains), buses, canal boats, and river ferries.



### Bangkok BTS And MRT Map

<https://me-qr.com/EevTIT6r>



### Foodies' Paradise Around Chulalongkorn University

<https://me-qr.com/itYTfBrQ>



### Must-see Attractions in Bangkok

<https://me-qr.com/khI8yZQq>



### Things To Do in Bangkok

<https://me-qr.com/O0IXWdOh>



## Contact Information

### Sasin Exchange Program

Email: [exchange@sasin.edu](mailto:exchange@sasin.edu)

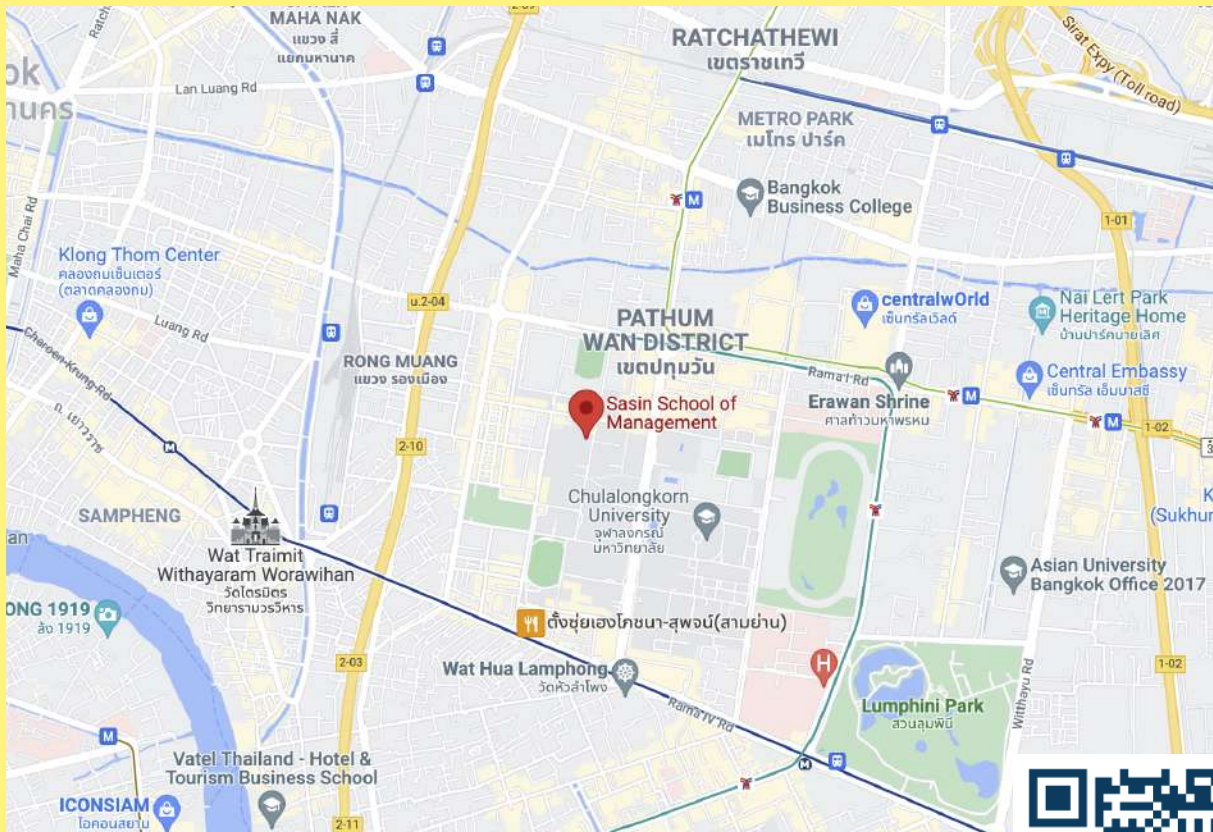
### Sasin Experience

Registrar | Student Services | Alumni Engagement

### Sasin School of Management

Sasa Patasala Building (6<sup>th</sup> Floor), Pathumwan, Bangkok Thailand 10330

## Campus Location



### Sasa Patasala Building

Soi Chula 12, Phayathai Road  
Bangkok 10330, Thailand



For more information: [sasin.edu](http://sasin.edu)

# inspire.connect.transform

for a better, smarter, sustainable world

---

**Sasin School of Management**

Sasa Patasala Building

Soi Chula 12, Phayathai Road, Bangkok 10330, Thailand

[sasinschool.com](https://sasinschool.com)