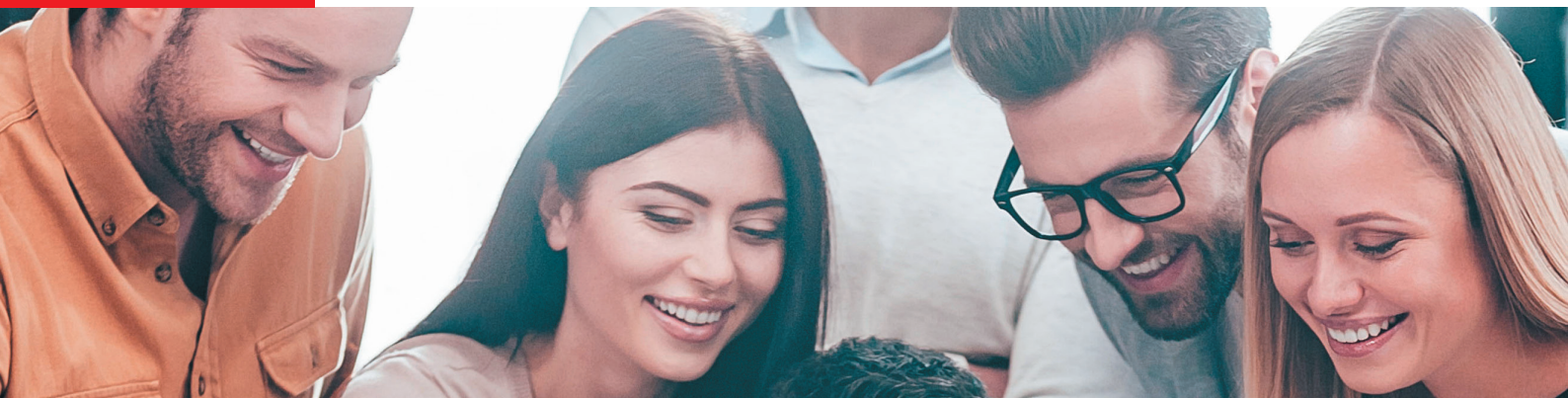


International MBA Program

Lyon-Ecully Campus



Factsheet

Academic year 2022/2023

Academic Calendar

- **Period I: Core courses**
Early September to Late February
Nomination deadline: May 15
Application deadline: May 29
- **Period II: Electives**
March 13 to July 13, 2023
Nomination deadline: January 9, 2023
Application deadline: January 23, 2023

Nominations

Nominations will be completed via a new application "Mobility Online". You will receive an automatic e-mail from **emlyon** business school providing a personal link for you to create your account. Then, you will be able to nominate the students directly on the platform.

For any question concerning the nominations, please do not hesitate to send a mail to: nrousseau@eml-executive.com

Workload

Our MBA participants take on average 7 electives, up to a maximum of 10 for the full elective period. Exchange students may take less electives if attending a short period only. They may take 1 to 7 electives. Elective specializations include Business Development, Business Consulting, Entrepreneurship Experience, Finance, Marketing, Product Management, Project Management, Sales Management and Supply Chain. All courses are delivered in English.

Classes are based on action learning, group work and interactions with participants and professors.

Assessment in class is usually 50% group work and 50% personal work or rarely, an examination.

Course catalogue

Core courses: <https://bit.ly/MBACoreCourses>

Electives: <https://bit.ly/MBAElectives>

- Core courses are split into 5 blocks of 4-5 courses and each block is 1 month long
- Elective courses are scheduled across the whole elective period
- There is a 2 week Winter closure during the core courses from December 22, 2022 to January 3, 2023.

We recommend exchange students to enroll in courses from the same block if attending the 1st period. Some core courses are not available to exchange students due to prerequisites or course length. Please contact our MBA coordinator for more information.

Participants are typically provided 2 to 3 weeks for individual and group assignments. Any exams take place at the end of the core course blocks or at the end of each electives. Any participant who fails a course is required to resit the assignments or exam at the end of the academic year.

Requirements to apply

- Enrolled in a MBA program
- English proficiency :
 - TOEFL 90
 - IELTS 6.5
 - TOEIC 850
- 3 years minimum of work experience

MBA cohort

- 40 MBA students.
- 90% of international students including 18 different nationalities.
- Average age of 32 and 7 years of work experience.
- Small class size for more interactions with an international and experienced cohort.

Find more video information on our MBA exchange: <https://bit.ly/36TbSOT>

Living Cost

Estimation: 1,100 euros per month.

Health Insurance

NON EU Students > Stay more than 3 months in France > Student French Social Security

The “Sécurité Sociale” is French Health-care plan is a basic social coverage which allows you a part refund on your medical expenses. The French “Sécurité Sociale” is mandatory for every international students (European and non-European nationalities) staying more than 3 months in France.

International students: register through the following link: <https://etudiant-etranger.ameli.fr/espace/#/>

NON EU Students > Stay less than 3 months in France

You have no obligation to register to the French insurance plan. However we strongly invite you to subscribe to an international insurance back in your country that will cover you during your stay in France. That insurance is mandatory for your visa application.

You can subscribe to HEYME Worldpass Schengen insurance (<https://bit.ly/HEYMEinsurance>) you wish. You have a 10% discount with code HEYME-10.

French students: update your file and ‘carte vitale’ with the CPAM (caisse primaire d’assurance maladie).

European students: make sure you get a valid EHIC (European Health Insurance Card) for your whole stay in France.

Students from Québec need to provide the CPAM with the SE 401 Q106 form.

Complementary health insurance

French students: It is possible and recommended to sign up for a complementary health insurance. HEYME have special offers for students but you can take the company of your choice. You have a 10% discount with code EMLYON-10. This insurance will allow students to get a better refund of expensive medical cares: dental care, specialists...

International mobility insurance

emlyon business school has developed a partnership with Groupama. Every enrolled student at **emlyon** business school can benefit from it, whatever the nationality and the country of residence. Please note that this insurance is for motilities abroad, it is not a complementary insurance. As a consequence, non-French students must register to the French health plan “sécurité sociale” as soon as they arrive in France. More information through the registration portal.

Third-party liability

It concerns insurance in case students cause damage to a third party. If you are not insured against this risk in your own country, you could be insured upon arrival at **emlyon** business school. It is usually included in your house insurance, otherwise it costs 10€ for a year.

Student card

In order to obtain the Student Card, students must have their administrative file on the platform complete and validated by the Student Support team. Make sure your file is complete before your arrival. You will receive information concerning the administrative registration on due time.

Visa

Passport

Citizens of European Union countries only require their identity card to enter France, but citizens from other countries require a passport issued in their country of origin. The passport must not expire before the end of the planned stay.

Visa

For International students wishing to stay in France, the first step is to check if it is necessary to obtain a visa from the French consulate in your country of origin: https://france-visas.gouv.fr/en_US/web/france-visas/

For some nationalities, it is mandatory to go through the pre-consular Etudes en France procedure. Check here if this is your case: <https://bit.ly/VisaProcedure>

There are two types of visas:

- **Short-stay visa (visa de court séjour)** is issued for stays up to 3 months.
- **Long-stay visas (visas de long séjour)** are issued for stays over 3 months.

Concerning the long-stay visas:

- **Long-stay visa D “Dispense Temporaire de Titre de séjour” (Temporary Exemption of Residence Permit)**
This visa allows students to study in a public or private institution of higher education for a maximum of 6 months. It is not renewable, is not convertible into a student residence permit card and does not give access to social aids (social security, housing aids...).
- **The student long-stay visa, called also Visa D-VLS-TS** is a one-year visa that needs to be validated once you arrive in France. This Visa is renewable, can be converted into a residence permit and gives access to social aids.

Please note 3 very important pieces of advice

- A tourist visa cannot be converted into a student visa in France or in any other country of the European Union and it does not allow you to register at a French school.
- A “1 Transit Schengen” visa does not allow you to travel through Europe.
- A “D visa + 1 Transit Schengen” will only allow you to transit once through a European Union country when coming to or leaving France.

Website

<https://masters.em-lyon.com/en/International-MBA>

Contacts

Incoming MBA participants

Ms. Nelly ROUSSON
Tel: +33 (0)4 72 18 29 06
nrousson@eml-executive.com

Outgoing MBA participants

Ms. Jelena TASOVAC
Tel: +33 (0)4 78 33 77 85
tasovac@em-lyon.com

Exchange Agreements and Partnerships

Asia

TBC
AsianAcademicPartnerships@em-lyon.com

North America, Africa, Middle-East, Oceania, UK & Ireland

Mr. Jacques MARINO
Tel: +33 (0)4 72 18 79 73
marino@eml-executive.com

Western Europe (except Austria, Belgium, Germany, UK, Ireland, Italy, Netherlands, Switzerland)

Ms. Sonia CAMPILLO GARCIA
Tel: +33 (0)4 78 33 79 13
campillo@em-lyon.com

Eastern Europe, Austria, Belgium, Germany, Italy, Netherlands, Switzerland, Turkey

Ms. Patrizia VIDONI-COUTIER
Tel: +33 (0)4 72 18 29 16
vidoni@em-lyon.com