

BUILDING TOUR REFERENCE SHEET



THE BUILDING TOUR COVERS:

The Seymour Schulich
Building
&
The Rob and Cheryl
McEwen Graduate Study
& Research Building

GENERAL TIPS:

- Ask visitors questions to tailor the tour for them
- Share your experiences to make the tour more personal
- Let them interrupt with questions and ensure that they hear you
- Focus on highlighting Schulich's strengths, and avoid direct comparison to other business schools

SEYMOUR SCHULICH BUILDING

FIRST FLOOR

CIBC Marketplace

This space is the heart of the building, where many networking events, career fairs take place; designed with social responsibility in mind: “Green Concrete” made from recycled slag and fly ash, energy efficient glass allowing natural light, limestone from Algonquin Park.

Class rooms/Breakout Rooms

Theatre-style (north and east sides, 70-75 capacity) and seminar-type (south side, 20-25 capacity); 10 breakout rooms on the main floor.

(Tip: Hallways are long and give you some time to get to know the visitor)



Robert McEwen Auditorium

Largest lecture hall at Schulich (300 people) used to host info sessions, workshops, speakers & seminars.

Other highlights:

- 335,000 sqft Courtyard, hosts BBQs in the Summer
- Graduate Business Council (GBC) office
- Schulich Market Café
- Executive Dining Room

LOWER LEVEL

Student Clubs

Club offices of 26 active graduate clubs. (Tip: mention your membership or executive experiences with the student clubs and emphasize the students engagement and career benefits).

Deloitte Student Commons

Renovated through sponsorship by Deloitte in 2013, new tables, new chairs, improved lighting, updated design; more work space to promote social interaction.

Tuchner's Eatery

Very convenient place to grab lunch/dinner with friends (Tip: this is an alcohol friendly place!)

Printing and Copying Services

Tucked away near the elevators at the basement, this is the place to go to when you need to print brochures, banners, posters, and other marketing materials

SECOND FLOOR



Peter F. Bronfman Business Library

6 group study rooms with projectors, a fireplace lounge, “Quiet Zones” and “Quiet Rooms”. You can live chat with a librarian from your laptop! Bloomberg Terminals and extensive online databases available (Tip: point out the great view from the library).

Student Services & International Relations

Resource for admissions related inquiries, academic advising, courses, enrollment and financial support (Tip: mention that info sessions, students perspectives, exchange information can also be found here)

Career Development Centre

Offers career advising, coaching, mock interviews, resume and cover letter workshops. The CDC also maintains a job posting site and is staffed with industry specific advisors. (Tip: as students love to hear about career opportunities, mention salary surveys, Career Month in September, and Internship Month in January)

Academics

- Lots of study spaces on the Second floor.
- Schulich faculty include award-winning teachers, authors and industry pioneers.
- Teaching is theory and case based
- 18 specializations for the MBA/IMBA programs
- 8 Masters Programs

THIRD FLOOR

Dean's Office

Dean Deszo Horvath became Dean in 1988 and transformed the then Faculty of Administrative Studies into a global business school with an extended suite of degree programs. In 1995, benefactor Seymour Schulich donated \$15M to the school and the building was renamed in his honour. Today, Schulich is ranked in the world's top tier of business school by the Economist, Financial Times, and many others.

IT & Computer Labs

The IT Department supports the Schulich community with our own e-mail system and other technology needs. The Computer labs on 2nd and 3rd floor were upgraded in the summer of 2013.

ROB AND CHERYL MCEWEN GRADUATE STUDY & RESEARCH BUILDING

QUICK FACTS:

Opened in: January, 2019

Programs: All graduate level Programs

27 Meter Tall Solar Chimney to drive building-wide passive natural ventilation.

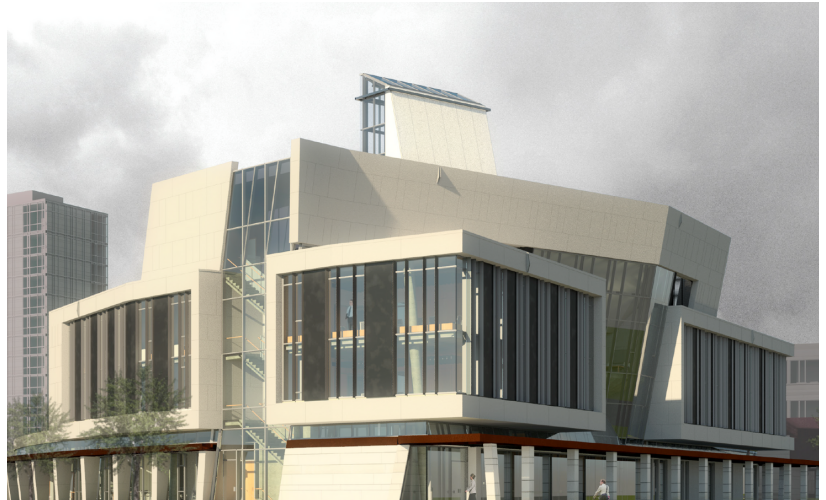
Thermally Active Building Design to maximizes natural ventilation and solar energy harvesting while minimizing unwanted solar heat gain.

71% energy savings and 67% reduction in greenhouse gas emissions compared to the Canadian Model National Energy code reference building.

Extensive green roofs featuring a range of vegetation; designed to meet Toronto's rigorous green roof standards.

Bird-friendly triple glazed high performance windows

Rainwater Recapture System and on-site storm water management



Learning Spaces

- One 112-seat flat-floor classroom
- Two 60-seat flat-floor classrooms
- 35+ Faculty offices
- 10 breakout rooms
- 10 Research Labs
- 4 seminar rooms
- 6 Centres of Excellence: Brookfield Centre in Real Estate & Infrastructure; Centre of Excellence in Responsible Business; Centre of Customer Centricity; Centre for Global Enterprise; Centre for Teaching Excellence; Hennick Centre for Business & Law.
- Graduate student lounges and meeting spaces
- Wellness Centre

Deloitte Cognitive & Visual Analytics Lab

The 800-square-foot lab is equipped with cognitive, data analytics and visualization technology, available to students and faculty in Schulich's **Master of Business Analytics** program, **Master's-level programs**, **Executive MBA** and **MBA programs**, as well as **undergraduate business** programs.

