



# FACTSHEET



2019

Incoming Exchange Students

# Wits Business School

The Wits Business School (WBS) is one of the leading business schools in Africa. It is the only business school in Africa which is a member of PIM (Partnership in International Management), an association of over 60 international business schools which promotes student and faculty exchange programmes. Each year we have a number of students from business schools around the world attending our MBA programme for their electives. Equally, a number of our own students choose to study at partner business schools overseas. The WBS is AMBA-accredited and a member of the African Association of Business Schools (AABS).

WBS is situated in the historical precinct of Parktown, Johannesburg, close to the commercial, cultural and financial hubs of Johannesburg.

## Innovation



### WBS Study Tours

WBS study tours in Africa offer unique, on-field learning, exposing exchange students to various companies, business models and etiquettes in the emerging market land-scape.

The tours cover three South African cities: Johannesburg, Durban, Cape Town and one African city. The costs of the trip (\$1 500 - \$2 500) includes company and site visits, flights, bed and breakfast, cultural activities and themed dinners and lunches. The tours take place in March 2019 and November 2019.

### MBA STRUCTURE

There are three programme formats:

1. **Full-time (FT):** Commences in January. The compulsory course work is completed in the first nine months and thereafter students have to complete their electives and either a leadership quest or an applied research project. The official duration is one year.
2. **Part-time (PT) Weekday or Saturday:** Commences in January. Students attend evening lectures twice a week, or for a full day on Saturday. Classes commence in January. The official duration is 18 months.
3. **MBA (PT) Long Block Release format:** Classes commence in June. The programme is offered on a long block study format with each block being 10-12 days long. The official duration of the programme is 18 months.

All courses comprise 22.5 hours' contact time.

In addition, students are expected to spend two hours in preparation for every contact hour in the classroom, i.e. an additional 12.5 hours per week per course. Preparation time would typically include: general background reading; prescribed readings; case study preparation; completing individual assignments; syndicate (group) meetings, and assignments and studying for examination purposes.

*"My semester at WBS was one of the most memorable experiences of my life, thanks to the warm welcome of faculty, staff and students alike. Few places offer such deep insight into the African business environment, and the travel opportunities in South Africa and surrounding countries are endless."*

Wael Abou Karam, HEC Paris – Master in Management – Programme Grande École



**Ranked 32 out of 17 000 universities internationally in the employment of alumni in top executive positions**



**WBS has graduated the most MBA's out of any business school in Africa – 6800 and counting!**



**WBS has Africa's largest Case Study Centre**



## 2019 TERM DATES: WBS ACADEMIC PROGRAMMES

### ACTIVITY

#### REGISTRATION

Online Registration  
Manual Registration  
(for Students unable to register online)

### DATES

#### TBC

January 2019  
January 2019  
(Location: Flower Hall, Main Campus)

#### ORIENTATION & GROUP DYNAMICS

MBA FT & PT Orientation  
MBA PT Orientation  
(for **WBS**, **PDBA** & **PDM** Graduates  
who have received Credits)

MMFI Orientation  
MMENVC Orientation  
MMIS Orientation  
MMBEC Orientation  
MMSM Orientation  
PDM FT Group Dynamics  
PDBA Group Dynamics

#### TBC

January 2019  
January 2019  
  
January 2019  
January 2019  
January 2019  
January 2019  
January 2019  
1 - 18 January 2019  
1 - 12 January 2019

#### First Teaching Block

Examination week(s) (Full Time classes)  
Examination week(s) (Part Time classes)

#### 19 January – 29 March 2019

18 March – 29 March 2019  
25 March – 29 March 2019

#### Second Teaching Block

Examination week(s) (Full Time classes)  
Examination week(s) (Part Time classes)

#### 06 April – 14 June 2019

03 June – 14 June 2019  
10 June – 14 June 2019

#### Third Teaching Block

Examination week(s) (Full Time classes)  
Examination week(s) (Part Time classes)

#### 22 June – 30 August 2019

19 August – 30 August 2019  
26 August – 30 August 2019

#### Fourth Teaching Block

Examination week(s) (Full Time classes)  
Examination week(s) (Part Time classes)

#### 07 September – 15 November 2019

04 November – 15 November 2019  
11 November – 15 November 2019

**Please note:** The Wits Business School's term dates may differ from those of the University.

#### OFFICIAL PUBLIC HOLIDAYS

1 January	New Years Day
21 March	Human Rights Day
19 April	Good Friday
22 April	Family Day
27 April	Freedom Day
1 May	Worker's day
16 June	'Youth Day' observed
9 August	National Women's Day
24 September	Heritage Day
16 December	Day of Reconciliation
25 December	Christmas Day
26 December	Day of Goodwill

## MBA ELECTIVES TO BE OFFERED IN 2019

ELECTIVE*	BUSA
Asset Management and Portfolio Formation	7392A
Behavioural Economics	7462A
Business in Africa	7422A
Business Analytics	
Business Start-Ups	7444A
Case Competition	
Corporate Entrepreneurship	7445A
Development and Entrepreneurial Finance	7395A
Developing Effective Work Teams	
Effective Coaching	7425A
Emerging Markets and Globalisation	7426A
Industry & Competitor Analysis	7446A
Investment Analytics	
International Finance and Globalisation	7398A
Mergers & Acquisitions	
Issues in Leadership	7460A
Management Consulting	
Managing Service Operations	7450A
Negotiating Deep – Rooted Conflicts	7431A
Private Equity	7449A
Science, Technology and Innovation for Business Leaders	7434A
Social Entrepreneurship Initiatives	7435A
Storytelling	7437A
Strategic Brand Management	7438A
Strategic Finance	7456A

*An exchange semester at Wits University is an incredible and invaluable experience, one that provides an excellent combination of top notch professors, students with fascinating backgrounds and a curriculum that is enlightening as well as thought-provoking. I would do it all over again, definitely!*

Daniel Glarner, St Gallen University, Switzerland

**Please note:** Electives will run only on condition that class cohorts are satisfactorily subscribed.

# excellence

## APPLICATIONS

### Registration Process

Exchange students are selected by their home institutions. Once WBS receives confirmation of their selection the student will be sent a WBS information pack. Registration for courses takes place on arrival at WBS.

### Application Deadline

The deadline for applications is three months prior to the commencement of classes for each quarter. Students may enrol for any of the four quarters.

### Study Permits/Visas

Exchange students are required to apply for a study permit/visa at the South African High Commission, Embassy, Consulate or Trade Mission in their country of residence or country of origin for stays of longer than 90 days. For stays less than 90 days exchange students are required to apply for a visitor's permit.

In addition to financial and medical reports, students will need to submit a letter of acceptance to study at WBS and proof of accommodation. The latter two documents are sent to students by the Co-ordinator of International Programmes, Karen Trent. See back of brochure for contact details.

Visit [www.dfa.gov.za/sa-abroad/salist.htm](http://www.dfa.gov.za/sa-abroad/salist.htm) for information on your closest South African Consulate.



### Health Insurance

It is compulsory for all international students to have full medical insurance cover from a South African medical insurer if their stay is longer than 90 days. Wits University has negotiated a favourable deal with a few medical insurance companies. Insurance is obtainable on arrival at the University. The Campus Health & Wellness Centre also offers comprehensive medical services.



**Wits is home to four Nobel Prize winners**



**Wits was the first university that Mandela addressed after his release from prison**

### Academic and Research Excellence

- The academic faculty members at WBS bring together years of corporate knowledge, research experience and extensive academic achievement from around the continent and world.
- WBS has a very strong research base; 95% of our academic staff have PhDs.
- In 2016 WBS established two new endowed Chairs: The WBS Telkom Chair in Digital Business and the WBS Chair in African Philanthropy. These are 'firsts' for Africa and will place WBS at the forefront of research and course development in these fields.



**“The opportunities are endless”**

## LEARNING EXPECTATIONS

### Language of Instruction

All courses are taught in English.

### Areas of Concentration

Finance, Information Management, Human Resources, International Business, Strategy and the Business Environment in Africa and Emerging Markets.

### Class Format

Lectures, case studies, discussions, team projects and industry expert presentations, on-field learning and simulations. The high level of classroom participation, group work and interaction among students and faculty mean that exchange students must be proficient in English (speaking, reading and writing).

### Class Attendance

Mandatory.

### Class Size

10 – 65 (smaller classes for Elective Courses).

### Course Load

Three courses per quarter are recommended for students whose home language is not English. There is no prescribed minimum or maximum number of courses, however – students must satisfy the requirements of their home institution. The number of lecture hours per course is 22.5.

### Grading

Grading is based on class participation, individual and team assignments (projects) and presentations, case analyses and a final examination written at the end of the quarter. A percentage grading system is used with the final course grade based on a five symbol scale (A - D, F). A conversion of grades table will be supplied with the student's academic transcript.

# STUDENT LIFE

## General Environment

WBS is situated approximately 1.5 km from the main Wits University campus in the leafy, historic Johannesburg suburb of Parktown. Facilities at the attractive WBS campus include modern lecture and syndicate rooms, auditoriums, computer labs, a cafeteria and one of the leading management libraries in South Africa.

Students also enjoy access to the many facilities on the main university campus.

## Accommodation

Secure accommodation is provided for exchange students at The Wits Junction, the perfect atmosphere for international students to experience, to immerse themselves in South African culture and to make a few friends. Each self contained, furnished compact apartment has a bathroom, kitchenette, cooker and fridge and is also equipped with a telephone, Internet connectivity and heater. Parking is available and there is a 24-hour security service on campus.

Housing is arranged through Karen Trent (see contact details).

Application deadline: 3 months before arrival.

### Accommodation Costs:

#### 1. U House

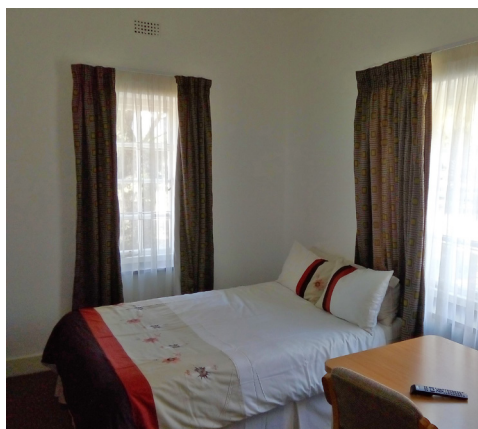
- On campus:
- R5800 per person per month
- Shared accommodation
- Will increase by around 10% for 2019

#### 2. Trematon House

- On campus
- Bachelor apartment
- R14 000 per month
- Will increase by around 10 % for 2019

#### 3. The Junction

- Off campus
- Bachelor pad
- R14 000 per month
- Will increase by around 10 % for 2019



### Cost Estimates (in US\$ - approx.)

- Food: \$250 per month  
Car hire: \$550 per month  
Books: \$70 - \$100 per book  
Health insurance: \$100 per month  
MBA Africa Study Tour: \$1500-\$2500  
Materials: Course materials are free of charge for exchange students (as are E-mail and Internet access)  
Miscellaneous: Any additional costs

### Sports Facilities

There are 2 tennis courts, a swimming pool and a squash court on the WBS campus. There are also numerous sports clubs, societies and recreational facilities within walking distance on the main Wits campus. Exchange students pay on a pro-rata basis for club membership and the use of sports facilities. There are additional sports facilities at the Wits Education Campus, within walking distance of WBS.

### General

International students are housed together and often socialise and travel or sight-see in groups. South Africans are hospitable, and fellow classmates frequently invite exchange students on outings over and above those organised by the class.

There are restaurants and banks in the vicinity of the WBS, and large shopping malls are situated in nearby suburbs. Public transport in South Africa is generally poor, but there are bus routes to the malls. Uber provides a safe, quick alternative that is competitively priced. For tips and information on living in South Africa, visit [www.infoafrica.co.za](http://www.infoafrica.co.za).

### Other Advice

The Rand/Dollar and Rand/Euro exchange rates are very favourable for students coming to South Africa – therefore, accommodation, eating out, clothes, travelling and entertainment will cost less than in the US or Europe. The exception is the purchase of new or used cars, and exchange students often opt to hire a car (and share expenses) for the duration of their stay.

It is best to organise an international driver's license applicable to South Africa in your home country. Please bear in mind that in South Africa we drive on the left-hand side of the road.

With regards to crime: as in any large city, students need to take 'common-sense' precautions for their personal safety.



### Additional benefits

- WBS employs a 'buddy system' for all incoming exchange students, whereby a local student is 'paired' with an international student to ensure their stay here is stress free!
- International students will also be given the option to experience the real African bush, with a trip to a game reserve.
- Numerous other optional activities will also be planned, including cultural activities and a trip to Cape Town and surrounding wine farms.

*"The Business Campus is well-equipped and well-maintained. The vast selection of extraordinary places and the favourable price level make South Africa an incredible country for travelling. Since the courses will be held in blocks of a few days you will have plenty of opportunities to go on road trips around the country. Before and during my stay I have heard a lot about crime in South Africa. I didn't have any negative experiences."*

Phillipe Weber, St Gallen, Switzerland





## ABOUT JOHANNESBURG

- > Johannesburg - aka Jo'burg, eGoli or Jozi - is a rapidly changing city and the vibrant heart of South Africa. The city is one of the 50 largest metropolitan areas in the world and has a population of over 4.5 million.
- > Johannesburg was established in 1886 following the discovery of gold on what had been a farm along a ridge called the Witwatersrand ("ridge of white waters"). With gold mining at its historical heart, the city is now the commercial and financial hub of South Africa and the geographic 'gateway' to the rest of the continent.
- > With 'vibey' urban nodes, such as Sandton, Rosebank and Newtown, and great shopping and nightlife, Johannesburg is also known as the world's biggest man-made forest, with more than 10 million trees populating its hilly suburbs.
- > Jozi is also known for its great climate. The summer months (October-April) are sunny and warm (an average maximum temperature of 25.6°C) with frequent afternoon thunderstorms. Evenings are pleasantly cool. Winters are also sunny, but dry, and while the average maximum temperature is around 16°C in June, temperatures can plummet overnight to around 1°C.
- > Johannesburg is a treasure trove of cultural and historical tourist attractions, including:
  - Maboneng Precinct
  - Apartheid Museum
  - Hector Pieterse Museum
  - The SAB World of Beer
  - Cradle of Humankind
  - Constitution Hill
  - Vilakazi Street in Soweto
  - Newtown Cultural Precinct
  - Rosebank Shopping District
  - Sandton City
  - Emmarentia Dam
  - Origins Centre
  - Walter Sisulu Botanical Garden
  - The Rosebank and Parkwood Gallery Precinct
  - Wits Art Museum
  - Neighbourhood Goods Market and Braamfontein
  - Hop on Hop off City Tour Bus
  - Township Bicycle Tours and City Walking Tours
  - Sports Events
  - Pilanesberg Game Reserve (2h30min outside of Joburg)



WITS  
UNIVERSITY



## CONTACT INFORMATION

### Dr Renee Horne

Director: International Programmes & Partnerships  
Renee.Horne@wits.ac.za

### Postal Address

Wits Business School  
PO Box 98  
Wits 2050  
South Africa

### Websites:

<http://www.wbs.ac.za> (Wits Business School)  
<http://www.wits.ac.za> (University of the Witwatersrand)

### Karen Trent

Co-ordinator: International Programmes  
Karen.Trent@wits.ac.za

### Physical Address

Wits Business School  
2 St David's Place  
Parktown 2193  
Johannesburg



Twitter: @witsbschool

Facebook: Wits Business School

LinkedIn: [http://www.linkedin.com/company/wits-business-school?trk=rr\\_brands\\_carousel\\_name](http://www.linkedin.com/company/wits-business-school?trk=rr_brands_carousel_name)