



## Exchange Fact Sheet 2018 – 2019

Copenhagen Business School  
International Office  
Porcelaenshaven 18A (**new address**)  
DK-2000 Frederiksberg, Denmark  
Phone: +45 3815 3006 (Reception)  
E-mail: [rec.intoff@cbs.dk](mailto:rec.intoff@cbs.dk)  
ERAMUS code: DK KOBENHA05, PIC code: 998706666

## Web addresses

Copenhagen Business School - <http://www.cbs.dk/en>  
CBS International Outreach - <http://www.cbs.dk/intl>  
Information for exchange students - <http://www.cbs.dk/exchange>  
International Summer University Program (ISUP) - <http://www.cbs.dk/summer>  
Videos - CBS student life: <http://studentlife.cbs.dk/video/>

## Short facts

Copenhagen Business School (CBS) is a large business university with 22,000 full- and part time students. CBS teaches the traditional courses in Economics, Management and Business Administration but is also well known for the cross-disciplinary research and teaching, and students can combine business with for example philosophy, political science, psychology, commercial law or communication.

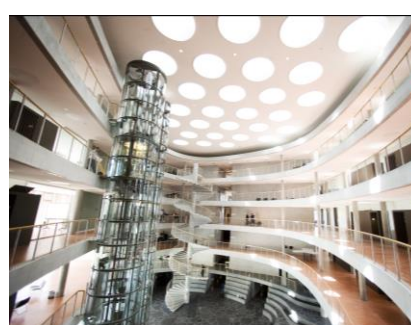
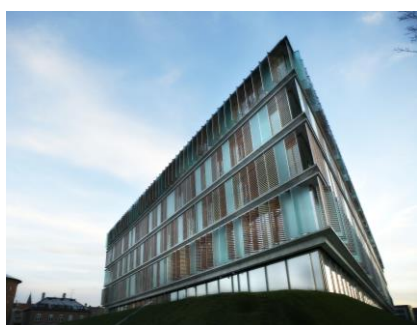
CBS is internationally accredited by AACSB, EQUIS and AMBA. The “triple-crown” accreditation.

The CBS campus is an urban campus located in Frederiksberg, an integrated part of Copenhagen. Our buildings are modern and we have state-of the-art facilities. Our campus is connected to the airport and downtown Copenhagen with three on-campus Metro stops.



Management Team		Housing
Dr. Tom Dahl-Østergaard Director of International Programs <a href="mailto:tda.intoff@cbs.dk">tda.intoff@cbs.dk</a> Cell: +45 4185 2014	Mr. Niels Henrik Larsen Deputy Director <a href="mailto:nhl.intoff@cbs.dk">nhl.intoff@cbs.dk</a> Cell: +45 2174 6905	Ms. Jess Grell Maltén Housing Coordinator  Ms. Dorte Brix Housing Officer <a href="mailto:housing.intoff@cbs.dk">housing.intoff@cbs.dk</a>
Inbound exchange students		CEMS & DD
Ms. Lotte Vesterlund Hansen (Acting) Team Leader <a href="mailto:lvf.intoff@cbs.dk">lvf.intoff@cbs.dk</a>  Academic Advisor for Bachelor students	Ms. Catherine Layolle International Programs Manager <a href="mailto:clb.intoff@cbs.dk">clb.intoff@cbs.dk</a>  Academic Advisor for Graduate students	Ms. Rene Barseghian Program Manager for: CEMS & Double Degree <a href="mailto:cems@cbs.dk">cems@cbs.dk</a> or <a href="mailto:doubledegree@cbs.dk">doubledegree@cbs.dk</a>
Ms. Nina Iversen International Programs Manager (until February 2019) <a href="mailto:receipt.intoff@cbs.dk">receipt.intoff@cbs.dk</a>  Academic Advisor for Bachelor students	Ms. Charlotte Inouye International Programs Manager <a href="mailto:ci.ic@cbs.dk">ci.ic@cbs.dk</a>  Academic Advisor for Graduate students	Ms. Wafa El Nielsen Program Manager for: CEMS & Double Degree  <a href="mailto:cems@cbs.dk">cems@cbs.dk</a> or <a href="mailto:doubledegree@cbs.dk">doubledegree@cbs.dk</a>
Outbound exchange students & Contract Management		
Ms. Mette Kloch Team Leader <a href="mailto:mk.intoff@cbs.dk">mk.intoff@cbs.dk</a>  Responsible for: Austria, Canada, Czech Rep., Estonia, Finland, Germany, Hungary, Iceland, Lithuania, Netherlands, Norway, Poland, Russia, Sweden, Switzerland	Ms. Louise Hoff Byrnak International Programs Manager <a href="mailto:lhc.intoff@cbs.dk">lhc.intoff@cbs.dk</a>  Responsible for: Australia, India, Indonesia, Japan, Malaysia, New Zealand, the Philippines, Singapore, South Korea and Thailand	Ms. Mai Engholm Pedersen International Programs Manager Erasmus Coordinator <a href="mailto:mep.intoff@cbs.dk">mep.intoff@cbs.dk</a>  Responsible for: Belgium, France, Greece, Israel, Italy, Morocco, Portugal, South Africa and Turkey
Mr. Scott Lewis International Programs Manager <a href="mailto:sl.intoff@cbs.dk">sl.intoff@cbs.dk</a>  Responsible for: USA, Ireland & United Kingdom	Mr. Anders Folkmann International Programs Manager <a href="mailto:af.intoff@cbs.dk">af.intoff@cbs.dk</a>  Responsible for: China, Hong Kong, Taiwan, Latin America, and Spain	Ms. Cecilie Kyndesen Erasmus Assistant <a href="mailto:erasmus.intoff@cbs.dk">erasmus.intoff@cbs.dk</a>  Responsible for: Learning Agreements for CBS students
International Summer University Program (ISUP)		
Assoc Prof. Sven Bislev Academic Director <a href="mailto:sb.msc@cbs.dk">sb.msc@cbs.dk</a>  Academic ISUP questions	Ms. Edita Arlauskaitė Program Manager <a href="mailto:ea.intoff@cbs.dk">ea.intoff@cbs.dk</a>  Administrative ISUP questions  Partner universities from: Spain, Asia, Latin America, Oceania, Middle East, and Africa	Mr. Tam Thien Nguyen Administrative Officer <a href="mailto:ttn.intoff@cbs.dk">ttn.intoff@cbs.dk</a>  Administrative ISUP questions  Partner universities from: Europe (except Spain), Russia, USA and Canada

Deadlines	
Nomination deadlines:	<p>Semester exchange: 15 April 2018 (fall/full year) 15 October 2018 (spring)</p> <p>Summer University: 13 February 2018 (first application round) 3 April 2018 (second application round)</p>
Application deadlines & Course selection:	<p>Semester exchange: (fall/full year) 16 – 24 April 2018 (spring) late October 2018 – dates to be announced</p> <p>Summer University: First application round: 13 February (noon) – 20 February (midnight) 2018 Second application round: 3 April (noon) – 10 April (midnight) 2018</p>
Accommodation:	<p>On-line application. Deadlines are approx. 1 June and 1 November (full semester exchange) and mid-April (Summer University/ISUP), but it will be specified online at: <a href="http://www.cbs.dk/housing">www.cbs.dk/housing</a></p>



Course information	
<p>CBS offers a wide selection of courses taught in English. All courses are regular courses for CBS students. For more information about the courses offered, please see links below. The Fall semester courses are uploaded in mid-April and the Spring semester courses are uploaded in mid-October.</p>	
Language of instruction:	<p>Danish and English Please note: the online catalogue with courses taught in English only reflect a small portion of the teaching at CBS.</p>
Undergraduate courses: (Bachelor level)	<p><a href="http://www.cbs.dk/undergrad">http://www.cbs.dk/undergrad</a></p>
Graduate courses: (Master level)	<p><a href="http://www.cbs.dk/grad">http://www.cbs.dk/grad</a></p>
Danish language courses:	<p>A Danish Crash Course is offered the week prior to the Introduction week. The Crash Course is a 20 hours intensive Danish language class. There</p>

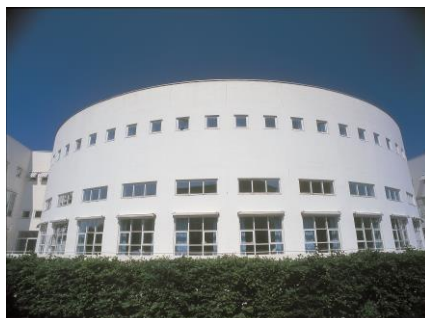
	<p>is a reduced fee of approx. DKK 1500 for the Danish Crash Course for students from partner universities (price in spring 2018).</p> <p>During the semester, a Danish language course is offered (for credit).</p>
Summer University courses:	<a href="https://www.cbs.dk/uddannelse/international-summer-university-programme-isup/courses-and-exams">https://www.cbs.dk/uddannelse/international-summer-university-programme-isup/courses-and-exams</a>
Credits & Workload	
Credit system:	ECTS (European Credit Transfer System)
Academic structure:	<p>Bachelor Degree: 3 years of study (6 semesters) with the total of 180 ECTS credits. Specialized with 3 years of business studies.</p> <p>Master Degree: 2 years of study (4 semesters) with the total of 120 ECTS credits.</p>
Full time workload pr. semester:	<p>30 ECTS credits.</p> <p>Exchange students are required to be full time students during their exchange at CBS.</p> <p>Please note: 30 ECTS credits are based on 825 Student Work Hours (SWH), which are not only the hours of work in class but also an extensive amount of work outside the classroom.</p>
Course load:	Most courses are 7.5 ECTS so 4 courses are a full-time work load
Summer University course load:	15 ECTS (2 courses)



Academic calendar	
<b>Fall semester 2018 (August – December):</b>	
<p>Danish Crash Course:</p> <p>Arrival date:</p> <p>Introduction program (mandatory):</p> <p>Fall semester starts:</p> <p>Exams:</p>	<p>20 - 24 August 2018</p> <p>26 August 2018 at the latest</p> <p>27 – 31 August 2018</p> <p>3 September 2018</p> <p>December/January (usually exams before Christmas for courses taught in English, but a few are held in January)</p>



Semester ends:	December/January
<b>Spring semester 2019 (January – June)</b>	
Danish Crash Course: Arrival date: Introduction program (mandatory): Spring semester starts:  Holidays: - Easter vacation - Public holiday - Ascension Day - Whitsun holiday  Exams: Semester ends:	14 – 18 January 2019 20 January 2019 at the latest 21 – 25 January 2019  28 January 2019  18 – 22 April 2019 17 May 2019 30 May 2019 10 June 2019  May/June End June NB: Exam dates vary so please do not book your return flight until you know your exact exam dates
<b>International Summer University Program 2018 (6 weeks, June – August)</b>	
Arrival date: Program start / Welcome day: Classes start: Exams:  Retake exams:	22 June 2018 23 June 2018 26 June 2018 Home assignments: 26/27 June - 30 July 2018 (Please note that exam will start on the first teaching day and will run in parallel with the course) 4 hour written exam: 31 July – 3 August 2018 Within two months from ordinary exams



Requirements	
For non-native English speakers:	<ul style="list-style-type: none"> <li>TOEFL iBT score of 91 or TOEFL PBT score of 577. We do <b>not</b> accept TOEFL iTP.</li> <li>IELTS minimum score 7.0</li> <li>CPE (Certificate of Proficiency in English, University of Cambridge ESOL Examinations) (Level C2)</li> <li>CAE (Certificate in Advanced English, University of Cambridge ESOM Examinations) (Level C1)</li> </ul>
For other accepted language tests and exemptions, see:	<a href="http://www.cbs.dk/en/study/bachelor/undergraduate-admission-step-1">http://www.cbs.dk/en/study/bachelor/undergraduate-admission-step-1</a> (select "English Level A" to see other accepted tests/exams)

Proof of English proficiency:	Please note: Language proficiency must be documented and submitted with the application to CBS.
Nomination & Application	
Nomination procedure:	All exchange students must be formally nominated by their home university. The home coordinator must fill out a CBS nomination form and e-mail this to CBS inbound coordinators ( <a href="mailto:receipt.intoff@cbs.dk">receipt.intoff@cbs.dk</a> ) or ISUP coordinators ( <a href="mailto:summer@cbs.dk">summer@cbs.dk</a> ).
Application procedure:	<p>Nominated exchange students will receive an e-mail from CBS with further instructions on how to apply.</p> <p>The following documents must be submitted as pdf files via the online registration flow to the CBS Inbound Coordinators:</p> <ul style="list-style-type: none"> <li>- Most recently updated university transcript (preferably in English)</li> <li>- Proof of English proficiency (unless exempted)</li> <li>- Resume/CV in English</li> <li>- Copy of passport (photo page only)</li> </ul> <p>Students have to submit only transcript and copy of passport in their application for the Summer University.</p>
Housing	
<p>As a result of changes in the Danish Campus Law, CBS (as of 1 January 2012) is no longer allowed to rent rooms to students. Therefore, the entire organization of housing for exchange students at CBS has been revised.</p> <p>Fortunately, CBS has been able to enter long-term <i>reservation agreements</i> with most of the privately owned dormitories that have been available in the past. This means that CBS will <i>facilitate</i> room renting for the exchange students. Students will not sign a contract with the CBS Housing Department but will have a contract with a private landlord instead. The CBS Housing Department will continue to manage the application and placement process in its role as facilitator.</p> <p>In short, as from 2012 CBS will no longer have owners' rights to a number of the rooms that have been at our disposal in the past.</p> <p>Housing in Copenhagen is very difficult to find and can be expensive. This is particularly the case in the fall semester when the demand for housing by far outstrips supply. In order to ensure adequate housing during the fall semester, the CBS Housing Department offers a private housing option as supplement to dorm accommodation.</p> <p>A private housing offer will always include a room with a bed, a desk for studying, internet access, a dresser/closet for your clothes and, of course, access to kitchen and bathroom.</p> <p><b>Please note that private housing is only available in the fall semester. No private housing facility or assistance is offered in the spring or the summer.</b></p>	
Application for housing	<p>Online application which opens a few months before semester start. Nominated students will be e-mailed directly on their CBS e-mail account (full semester).</p> <p>ISUP (Summer University) students will apply in mid-April.</p>
More information	<a href="http://www.cbs.dk/housing">http://www.cbs.dk/housing</a>

Living expenses	
Rent – dormitories:	Please be aware that the room sizes and prices are not the same for all dorms. There is therefore no standard room size or average room price. Price range approx. DKK 3,500-7,500 per month. For more information see <a href="http://www.cbs.dk/housing">http://www.cbs.dk/housing</a>
Rent – private housing:	The price of the room will reflect the facilities to which students have access. The price range of rent is currently approx. DKK 3,500–6,000 per month.
Food and daily expenses:	Approx. DKK 1,500 - 2,500 per month
Books/Supplies:	Approx. DKK 1,500 – 3,000 per semester
Transportation (bus, train, metro):	Approx. DKK 1,300 per semester
Social Program - Main Package (Optional):	Approx. 600 DKK
Weekend trips:	Approx. 1,600 DKK per trip
Visa requirements	
From the Nordic countries:	No residence permit is required
From EU and EEA countries:	Must have a residence permit to stay in Denmark for more than three months. This is applied for in Denmark upon arrival.
Other nationalities:	<p>MUST have their visa or residence permit in order before leaving their home country. The process is initiated by CBS. CBS will e-mail the necessary forms to each student whereupon the student will be able to submit the application at the nearest Danish diplomatic mission. After submitting the application, the student will need to submit biometric information in person according to the information at: <a href="http://um.dk/en/travel-and-residence/residence-and-or-work-permits/">http://um.dk/en/travel-and-residence/residence-and-or-work-permits/</a></p> <p>Please note that the students will be requested to pay two fees in connection with the residence permit application: one for the local Danish representation where they submit their biometrics and one for the Danish Immigration Services for processing the application. For more information please see: <a href="https://www.nyidanmark.dk/en-us/coming_to_dk/fee/fee.htm">https://www.nyidanmark.dk/en-us/coming_to_dk/fee/fee.htm</a>.</p> <p>Furthermore, please note that the students will be required to submit documentation for having a minimum amount of money at their disposal per month in the form of a bank statement in their own name and/or confirmation of a grant or scholarship. For 2017, the amount is DKK 6,015 per month.</p>
Students attending the Summer University, ISUP:	May need to apply for a short term tourist visa depending on their nationality. Please visit the website of your local Danish consulate to see if this applies to you.

Student Services & Facilities	
Buddy program:	<p>Exchange students can apply for a "buddy" to help them get through the first few weeks. "Buddies" are CBS students who have volunteered to help one or more of our exchange students.</p> <ul style="list-style-type: none"> <li>- Airport pick up.</li> <li>- Key to room + welcome package</li> <li>- Answer questions about practical matters</li> </ul> <p>Throughout the semester various activities are planned for the exchange students and their CBS buddies.</p>
Introduction week:	<p>A mandatory Introduction Week prior to semester start:</p> <ul style="list-style-type: none"> <li>- Courses and exams</li> <li>- Danish culture</li> <li>- IT and library</li> <li>- Campus tour</li> <li>- Optional social program with evening activities</li> </ul>
Exchange students have access to:	<ul style="list-style-type: none"> <li>- State of the art library services</li> <li>- Campus-wide high speed Wi-Fi</li> <li>- Computer &amp; printing facilities</li> <li>- Cafés &amp; canteens</li> <li>- Student organizations</li> <li>- Bookstore</li> <li>- 4 Metro stops on campus links CBS to downtown and the airport</li> </ul>

