

Career Development Centre

Schulich School of Business

BBA/iBBA 2016 Employment Report



Jordan Woods (iBBA '14)
Marketing Analyst - Digital Strategy &
Program Delivery, Bell Canada

Congratulations on graduating from the
Schulich School of Business!

With the rigourous education and training
you have received, yours is a future of
endless possibility and potential.

TABLE OF CONTENTS

- 1** Recruiting at Schulich
- 2** Compensation by Industry
- 3** Compensation by Function
- 3** Class of 2016 at a Glance
- 4** Companies Recruiting at Schulich
- 8** Meet the Career Development Centre Team

Recruiting at Schulich

“We work to understand your needs and help you develop strategies to make sure you stand out in an increasingly competitive marketplace.

The Career Development Centre is here to help you find the right fit with the right company or organization. In the past year we have gone through some restructuring to better align our core services to better service the career objectives of our students and newest graduates.

The good news is Schulich graduates continue to thrive in today’s increasingly competitive job market due to diverse perspectives, innovative programs and global reach of Canada’s preeminent business school.”

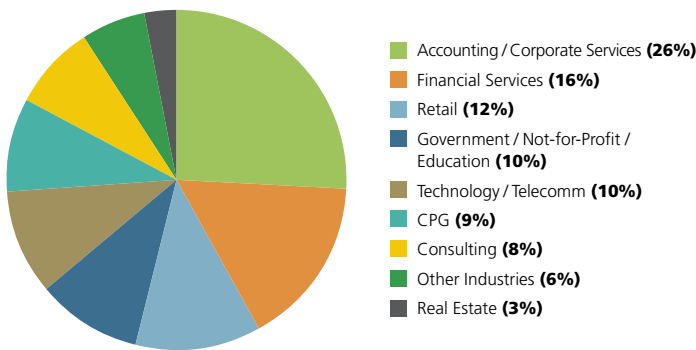


Robert Hines, JD

Executive Director, Career Development Centre, Schulich School of Business

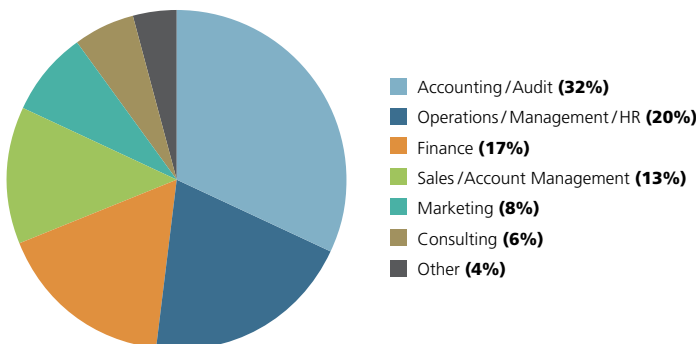
CLASS OF 2016

EMPLOYMENT BY INDUSTRY



CLASS OF 2016

EMPLOYMENT BY FUNCTION



CLASS OF 2016

GRADUATE EMPLOYMENT AT A GLANCE

88% of students were hired within 3 months of graduation

\$54,000*

Average salary (includes: base salary and other guaranteed compensation)

\$4,154*

Average signing bonus

\$40,000 – \$96,000

Salary range

\$52,000*

Median salary

*For those who reported.

Compensation by Industry

INDUSTRY	SALARY (\$)		
	Average	Minimum	Maximum
ACCOUNTING/CORPORATE SERVICES	46,098	42,000	58,000
CONSULTING	59,923	45,000	68,000
CPG	56,143	42,000	70,000
FINANCIAL SERVICES	60,731	44,000	96,000
GOVERNMENT / NOT-FOR-PROFIT / EDUCATION	53,077	45,000	60,000
REAL ESTATE	54,500	48,000	60,000
RETAIL	54,944	42,000	65,000
TECHNOLOGY / TELECOMM	54,750	48,000	65,000
OTHER INDUSTRIES	50,333	40,000	58,000

ANNUAL SALARY AVERAGE

2010	2011	2012	2013	2014	2015	2016
\$52,000	\$54,000	\$54,000	\$54,760	\$52,000	\$54,500	\$54,000



Compensation by Function

INDUSTRY	SALARY (\$)		
	Average	Minimum	Maximum
ACCOUNTING / AUDIT	46,740	42,000	60,000
CONSULTING	61,667	54,000	68,000
MARKETING	55,154	42,000	66,000
FINANCE	62,038	42,000	96,000
OPERATIONS / MANAGEMENT / HUMAN RESOURCES	52,903	42,000	68,000
SALES / ACCOUNT MANAGEMENT	55,000	40,000	70,000
OTHER	58,400	55,000	65,000

PERCENTAGE OF STUDENTS SEEKING EMPLOYMENT WHO WERE HIRED

2010	2011	2012	2013	2014	2015	2016
89%	87%	89%	89%	87%	88%	88%

Class of 2016 at a Glance

Average GPA **7.00**

Average Class Size **25-55**

Male Students **50%**

Female Students **50%**



Companies Recruiting at Schulich

20 VIC Management Inc.
.....

A

Abundant Solar Energy Inc.
Accenture Canada
Adidas
Agent Partner Inc.
Alertdriving
Altec Inc.
American Express Canada
Armstrong Partnership Ltd.
AssetWorks, LLC
Awake Chocolate
.....

B

Bank of America Merrill Lynch
Bank of Canada – Banque du
Canada
Baxter Corporation

BDO Canada LLP
belairdirect
Bell Canada
BMO
BMO Capital Markets
Book4Time
BroadGrain Commodities Inc.
Brookfield Financial
Brookfield Global Integrated
Solutions
.....

C

Caffe Demetre
Cameron Stephens Mortgage
Capital Ltd.
Canaccord Genuity
Canada Bread Company Limited
Canada Goose
Canada Pension Plan
Investment Board

Canadian Tire Corporation
Limited
Cappgemini Canada
Chartered Professional
Accountants of Ontario (CPA)
CHEP Canada Ltd.
CIBC
CIBC Mellon
Citi Canada
Corby Spirit and Wine
CPG Connect
.....

D

Deloitte.
Deloitte Consulting
Department of National Defence
DHL
Donnelly Management Advisory
Services Limited
.....

E

EdgePoint Wealth Management
Elevation Pictures
Elgin Mills Sheet Metal Supplies
Emco Corporation
Energizer Holdings Inc.
Enterprise Rent-A-Car
Equitable Bank
ergoCentric
Ernst & Young Advisory
Export Development Canada
(EDC)
ExxonMobil
EY
EY Consulting
.....

“Schulich’s Career Development
Centre provided me with the
resources and expertise I needed
to jump start my career.”

Nirav Shah (BBA '14)
Associate, Financial Institutions & Real Estate
KPMG



F
 FIRMA Foreign Exchange
 FlashStock
 Forum Equity Partners
 Free Geek Toronto (FGT)
 Freedom 55 Financial

G
 General Mills Canada Corporation
 Global Finance Fund Inc.
 goeasy Ltd.
 Goldman Sachs & Co.
 Grant Thornton LLP
 Greenhill & Co.
 GreenOwl Mobile
 GreenSpace Brands
 Grow Financial
 GSK
 Guilfoyle Financial Planning Inc.

H
 Hays
 Hillsdale Investment
 Management Inc.
 HollisWealth
 Home Depot Canada
 HSBC Bank Canada
 Hudson's Bay

I
 IBM Global Business Services
 Imperial
 In the Funnel
 IntExhibit Inc.
 Invesco Canada

J
 Johnson & Johnson Inc.
 JSK
 Just Energy

K
 KEV Group
 KPMG Advisory Services
 KPMG LLP
 Kruger Products L.P.

L
 Labatt Breweries of Canada
 LEVEL5 Strategy Group
 Lombardi Media Corporation

M
 Magna International Inc.
 Manitou Investment
 Management Ltd.
 Manulife Financial
 Maple Leaf Foods
 Mark Anthony Group
 Maxit Capital

MCAP Commercial Limited
 Partnership
 Metroland Media
 Microsoft Canada
 Ministry of Community Safety and
 Correctional Services
 Ministry of Energy
 Ministry of Finance
 Ministry of Health and
 Long-Term Care
 Ministry of Transportation
 MNP LLP
 Monitor Deloitte
 Morgan Stanley Canada Limited
 Mosaic
 MyHeritage

**“Attending Schulich developed
 my critical thinking and
 communication skills, built
 my confidence and enabled
 me to excel.”**

Nicole Pizarro (BBA '14)
 Search Strategist
 Reprise Media Canada



Companies Recruiting at Schulich *(continued)*

N

National Bank of Canada
Nestle Canada Inc.
Nestle Purina Petcare
NetSuite
New Balance Canada
NewAge Products
Nordstrom
Normerica Inc.

O

Obero Solutions
Ontario Ministry of Health and
Long Term Care
Ontario Public Service
Optima Communications
International
OPTIMUS | SBR

Origin Merchant Partners
OTEC (Ontario Tourism
Education Corporation)
Otera Capital
Oxford Learning Centres Inc.

P

Pacer Air Freight
Paradigm Capital
PepsiCo Canada
PortfolioAid
PRGX
Procter & Gamble Inc.
Promontory Financial Group
Canada ULC
PwC Canada
PWO Canada

Q

Quinn & Partners Inc.

R

Randstad
Raymond James Finance Company
of Canada Ltd.
RBC Capital Markets
RBC Financial Group
RBC Global Asset Management
RBC Investor and Treasury Services
Royal Bank of Canada
Reckitt Benckiser
Reliance Comfort Limited
Partnership
Restaurant Brands International
Rexall Pharma Plus

Reynolds & Reynolds
Rogers Communications Inc.
Rosedale Academy
RSA Canada

S

Salesforce
SciCan
Scotiabank
ScotiaMcLeod
Sears
Sliq Media Technologies
SPP Canada Aircraft, Inc.
St. Joseph Health Care
State Farm Insurance Companies
Sun Life Financial

“I chose to study at Schulich because I could start studying business right out of high school. From day one, we were introduced to several activities that taught students how to communicate effectively in teams while developing our own leadership skills.”

Jasmin Dhaliwal (BBA '11)



T

TD Ameritrade
TD Bank Group
TD Securities Inc.
TELUS Communications Inc.
The Boston Consulting Group
The Citco Group of Companies
The Emirates Group
The Kraft Heinz Company
The Toronto Municipal Employees' Credit Union
The York School
Thomson Reuters
Tim Hortons

TimePlay Inc.
TJX Canada/Winners Merchants International L.P.
Toronto Research Chemicals Inc
Toyota Credit Canada Inc.
Treasury Board of Canada Secretariat (TBS)
Tricon Capital Group Inc.
Trident Consulting

U

Uber
UBS Securities Canada Inc.
Ulto Property Group Inc.

V

Vault
Venture for Canada
Verus Partners & Co.
Vision Critical

W

Walmart Canada
Wells Fargo & Company
World Vision Canada
World Wide Logistics

X

Xerox

Y

York University

“The opportunities available to get involved in the Schulich community and grow as an individual is one of the best things about the School. I have met a wide range of talented, bright people with many diverse interests.”

Seymour Korman (BBA Candidate '13)
President, Undergraduate Business Council



Meet the Career Development Centre Team

WE BRING EXPERTISE FROM MANY DIFFERENT INDUSTRIES TO OUR WORK AT THE CAREER DEVELOPMENT CENTRE:

Accounting Consulting Retail & Sales
Banking & Finance Entrepreneurship Technology
Consumer Health Care
Packaged Goods

**OUR ADVISORS
AVERAGE MORE THAN:**

**11 years
experience**

TEAM LEADERSHIP



Robert Hines, JD
Executive Director



Minoo Bhutani, MBA, ACC
Director



Phanindra Deonandan, MPA, ACC
Associate Director



Lyla Korhani, MBA, ACC
Associate Director

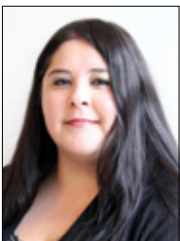
CLIENT SERVICES



Sybil Massey, BA
Client Services Team Lead
*Client Services Workflow
and On-line Resources*



Khushbu Chokshi, BAS
**Recruitment /
Events Coordinator**
*Recruitment Activities
and Events*



Rose Lucibello, BA
**Recruitment /
Events Coordinator**
*Recruitment Activities
and Events*



Michelle Trieu
Career Centre Assistant
Front Desk Support

ADMINISTRATION



Michelle Steiner, BA, B.Ed.
**Administrative Assistant
to the Executive Director**
Administrative Support

INDUSTRY ADVISORS / CAREER COACHES



Kathrin Bohr, MBA

Industry Advisor

*Public Sector / Sustainability /
Social Sector*



Victoria Cabral, BSc

Industry Advisor

*Financial Services / Insurance /
Master of Finance*



Diana Caradonna, BHRM, ACC

Industry Advisor

Accounting / Master of Accounting



Mark Freedman, MBA

Specialist

Consulting / Case Prep



Paul Irwin, CHRP

Industry Advisor

Health Care



Lisa Keenan, MBA, CHRL

Industry Advisor

Operations / Retail / Telecom



Amir Khan, BA, ACC

Industry Advisor

*CPG / Marketing & Sales /
Master of Management*



Mike Nadal, ACC

Industry Advisor

Banking / Master of Finance



Bonnie Wong, BCom, CHRL

Industry Advisor

Marketing / Technology

CONTACT US

Career Development Centre
Schulich School of Business, York University
Richard E. Waugh Suite, N202
4700 Keele Street, Toronto, Ontario
Canada M3J 1P3
(416) 736-5080

Students: career@schulich.yorku.ca
Employers: recruit@schulich.yorku.ca

schulich.yorku.ca/careerportal

